



# LIGHT MANAGEMENT



*netlife FLEX*  
**office**

**REGIOLUX**



SIMPLE · COMFORTABLE · INTELLIGENT

*netlife FLEX*  
office

LIGHT MANAGEMENT -  
DEFINING ROLES FLEXIBLY



## Starter kits

- Fields of application
- System components
- System set-up
- Office S kit
- Office L kit

## Components

- DALI sensors
- Power supply
- Push buttons modules
- Accessories
- Starter kits

## Luminaire ranges

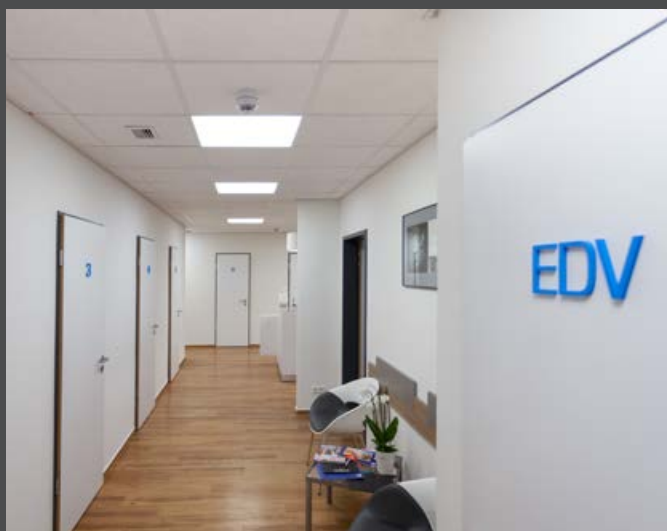
- Office lighting
- rail system

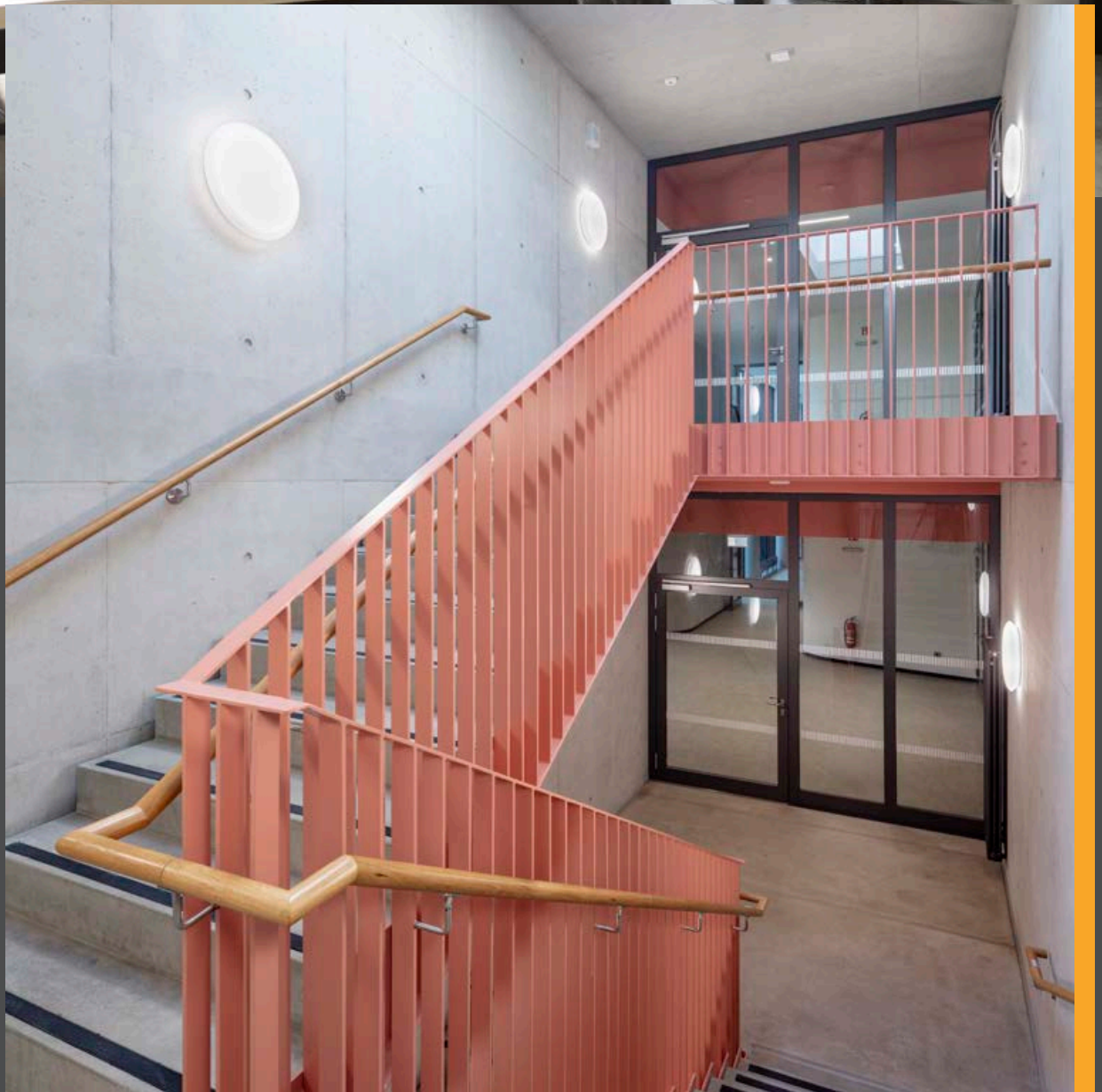


LIGHT MANAGEMENT

# DEFINING ROLES FLEXIBLY

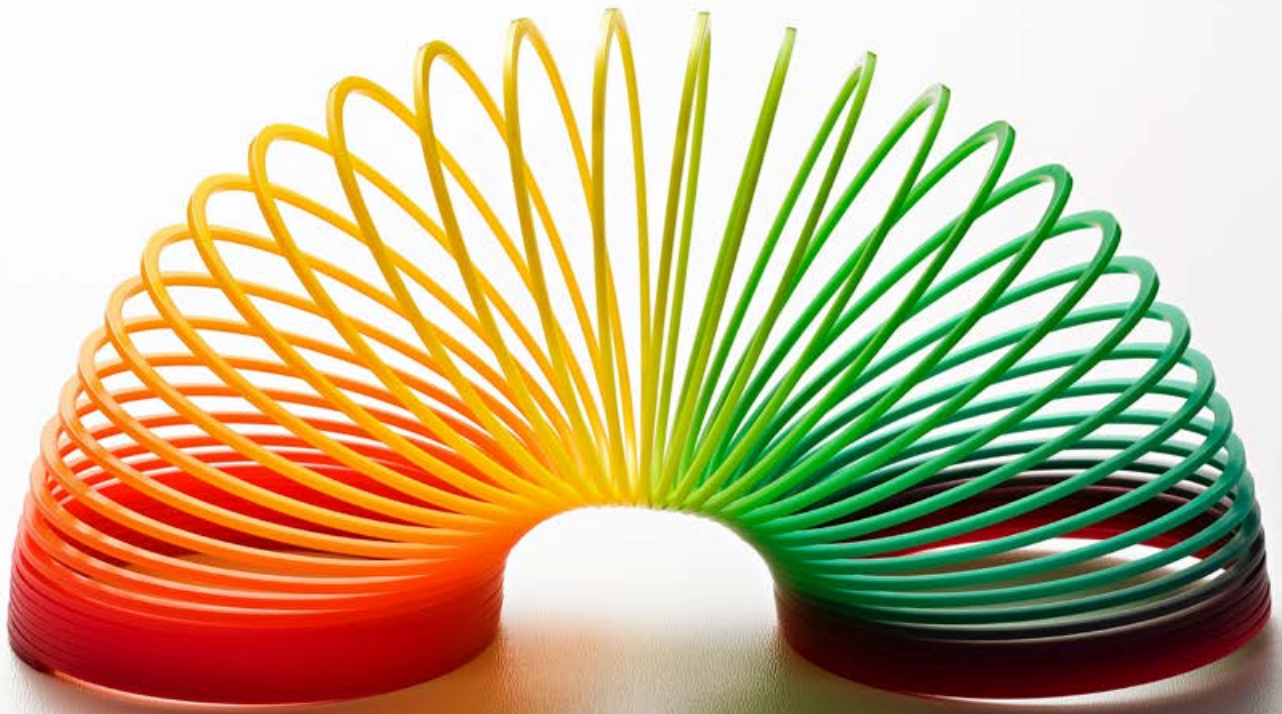
An efficient lighting system has to adapt to constantly changing circumstances during a working day. Not all workstations are the same and the tasks that are performed are often very individual. It should also be possible to design functional areas simply and optimally. Flex office systems offer a number of options here and as standard. Our starter kits are perfectly matched complete solutions that make designing efficient light management as easier and more flexible than ever before. In addition, bespoke solutions are in demand that fall back on our technical repertoire.





# FLEXOFFICE

## STARTER KITS



### ► Fields of application



### S KIT



a double workstation

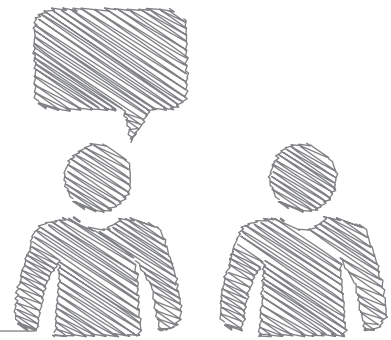
- + Complete solution
- + Hybrid system:  
wireless parameterisation  
DALI wiring
- + Complete range of  
functions
- + Additional options:  
expansions  
accessories

### L KIT



One or more workstations

# The complete solutions



The *netlife* concept has various expansion levels for kit solutions to light management. They have been compiled for typical designs in the office sector on the basis of current components. At Regiolum, the Advanced Services department is your contact for conceptual considerations, design, project planning and commissioning of light control systems. It allows the realisation of individual project solutions.

**Advanced Services:**  
+49 (0) 95 25 89-260

## ► Starter kits

<b>netlife FLEX office</b>	<b>S Kit</b>		<b>L Kit</b>
Room sizes	small	medium	large
Light management	one double workstation		several workstations
Control	6 Multimaster sensors/push button modules, max. 25 DALI controllers		
Commissioning	B.E.G. DALI LINK App		
Presence detection	●		●
Movement detection	●		●
Daylight control	●		●
Orientation light	●		●
Corridor function	●		●
Guided Light	●		●
Scenes and groups	●		●
Semi-, fully automated	●		●
Offset control	●		●
Project solutions	●		●

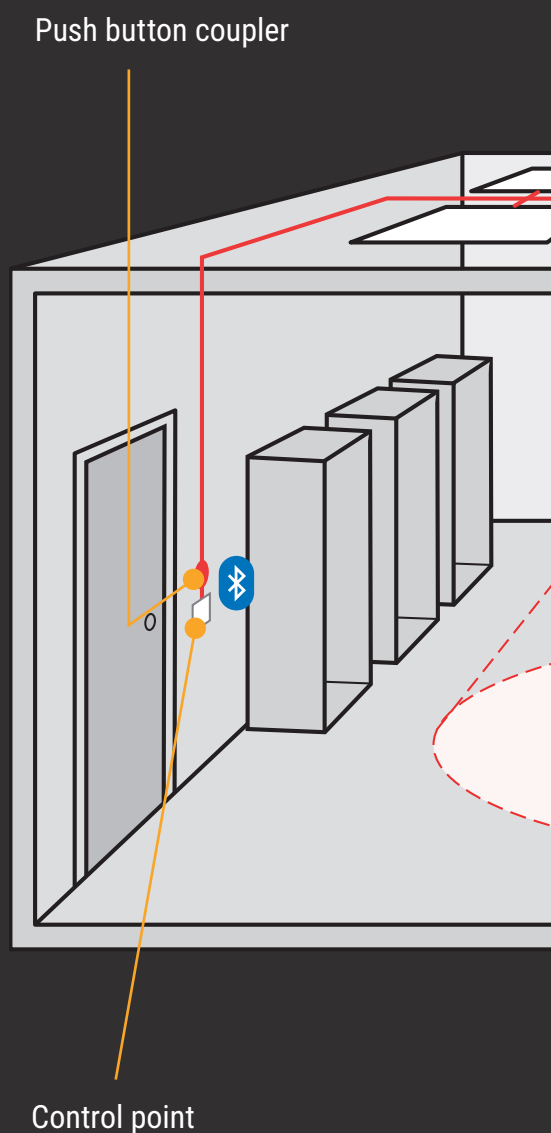
FLEX

# SYSTEM COMPONENTS

Our control systems in the field of *netlife* have been chosen to match the tasks in office buildings. They use the reliable communication between DALI components for the system set-up. The lighting settings are defined once by an intuitive app, saved in the DALI devices and then called up from these. This means that the lighting can be controlled easily and adjusted flexibly. This also applies for lighting solutions with rail systems in the different areas of the office building.

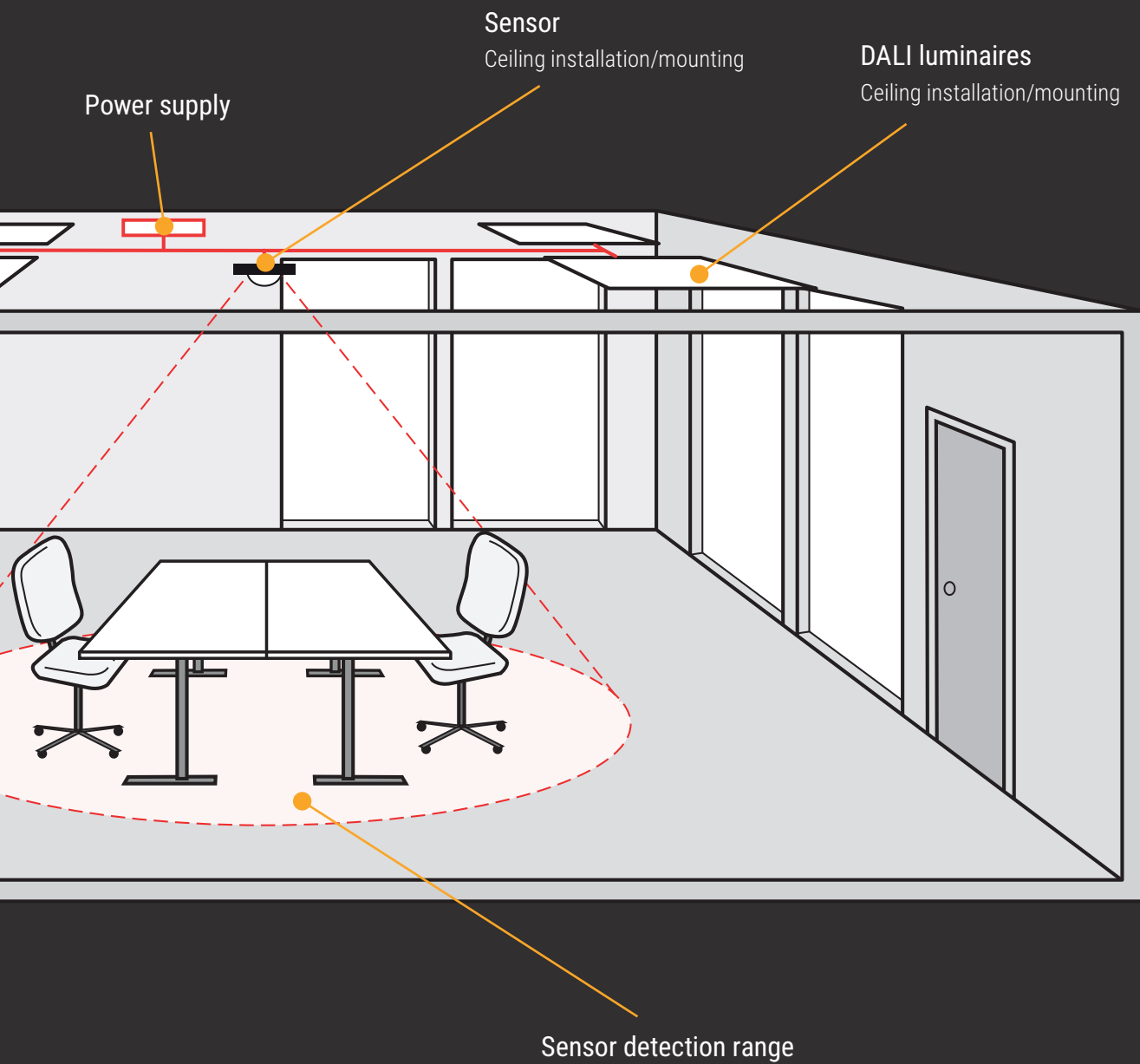
Expansions can always be implemented depending on the maximum available system currents. The focus thus remains on providing the best quality light at the workplace that can also be adapted to the requirements of your individual situation.

## ► System set-up



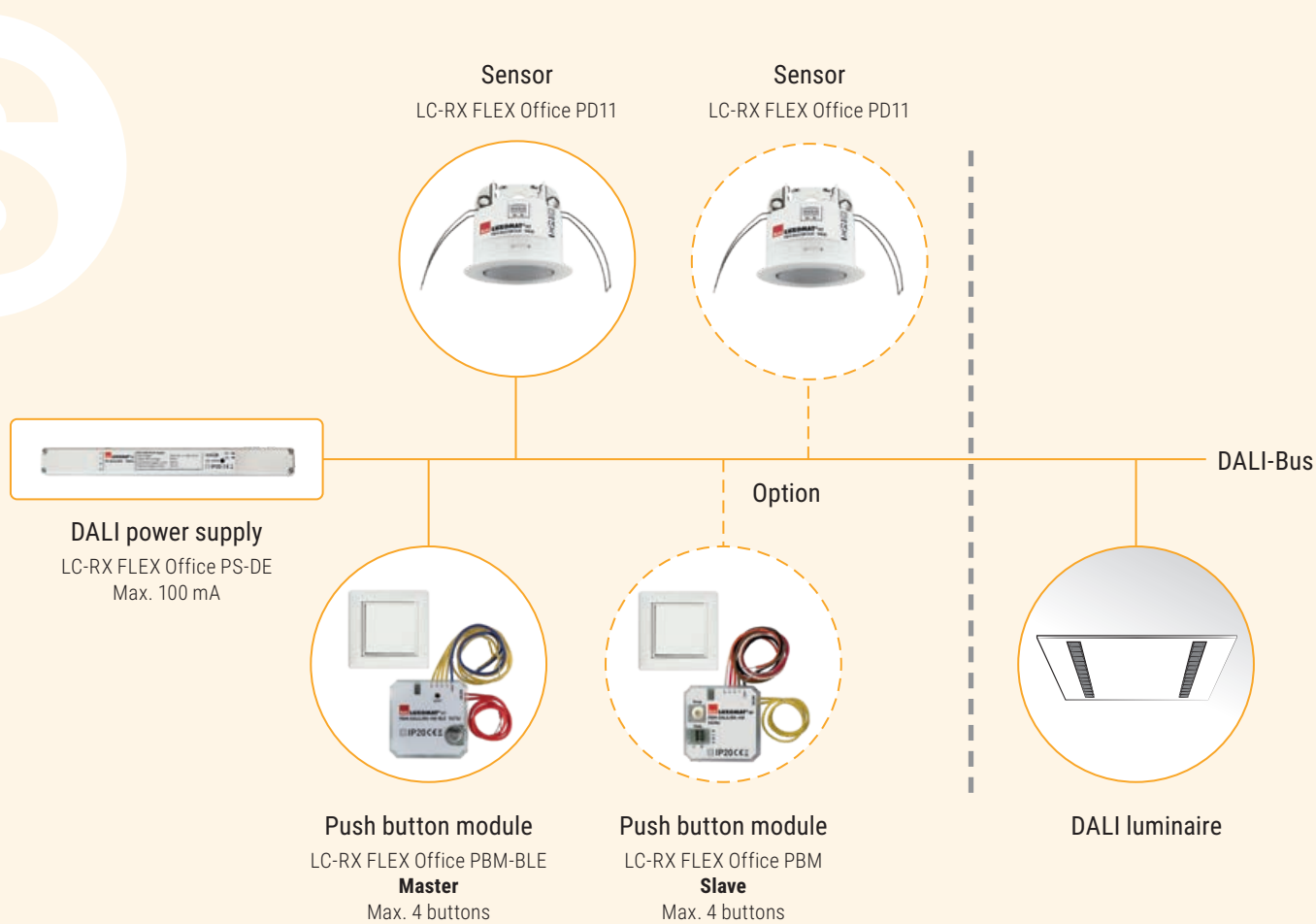
Any mains supplies to the devices is not shown.





# netlife FLEX office SKIT

## ► System overview



LC-RX FLEX Office S Kit | Article no. **8450 6009 212** | € excl. VAT. 633.00



# Light management for double workstations

## System components

- + DALI power supply for installation in suspended ceilings or ceiling mount
- + 4 binary inputs and integrated Bluetooth gateway

## DALI power supply

- + 110–277VAC 50/60 Hz
- + **dimensions** : 240 x 26 x 26 mm
- + **nominal current**: max. 100 mA

## Connection options

- + 6 multimaster sensors or push button modules
- + Max. 25 DALI devices
- + DALI push button module with 4 binary inputs and integrated Bluetooth gateway for hidden mounting behind flush mount switches
- + Digital inputs are configurable for potential free push buttons and switches
- + Dimensions 38 x 38 x 14 mm

## Sensor

<b>detection area</b>	vertically 360°
<b>coverage max</b>	9 m across, 6 m frontal, 3 m sitting work
<b>mounting height min./max./recommended</b>	2 m/5 m/2,5m
<b>dimensions</b>	52 x 48 mm
<b>functions</b>	presence and motion detection, daylight control, semi automatic, full automatic, scene control, orientation light, guided light, group control, offset control

## Parametrisation of the components

over Bluetooth by tablet/ smartphone and the BEG DALILINK app (Android und iOS)

## Optional expansion

- + Max. 4 further controllers (sensor and/or push button module) in the DALI line
- + With 6 control systems, max. 25 DALI devices
- + Slave push button module

## Accessories for expansion

### Control point

LC-RX FLEX Office PBM, 84506009215  
DALI- push button module as slave for further control points

The master push button module is needed in every system (Bluetooth interface for configuration per app); expansion only with slave button module.

### Sensor

LC-RX FLEX Office PD11, 84506009216  
DALI sensor installed in ceiling for expansion

### Power supply

LC-RX FLEX Office PS-REG, 84506009220  
DALI power supply as rail-mounted device

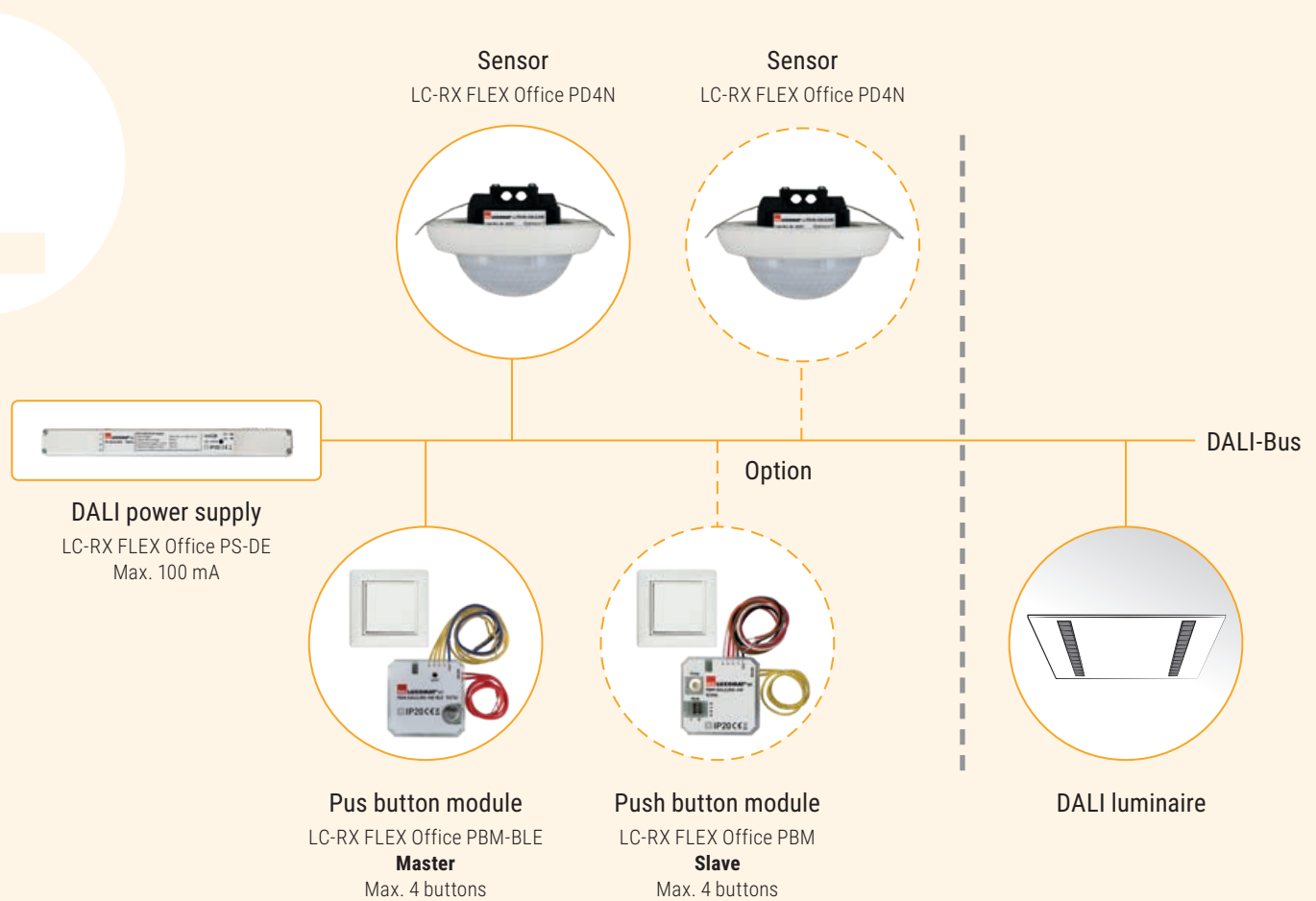
A max. of 4 further control systems (sensor and/or push button module) can be used in the DALI line.

## System currents

for each DALI controller: 2 mA  
for each sensor PD11: 2 mA  
for each push button module: 7 mA

# netlife FLEX office L KIT

## ► System overview



LC-RX FLEX Office L Kit | Article no. **8450 6009 213** | € excl. VAT. 669.00



# Light management for workstations

## System components

- + Consisting of a DALI power supply for installation in suspended ceilings or ceiling mount
- + 4 binary inputs and integrated Bluetooth gateway, as well as a ceiling sensor with large detection area

## DALI power supply

- + 110–277VAC 50/60 Hz
- + **dimensions** : 240 x 26 x 26 mm
- + **nominal current**: max. 100 mA

## Connection options

- + 6 multimaster sensors or pushbutton modules
- + Max. 25 DALI devices
- + DALI push button module with 4 binary inputs and integrated Bluetooth gateway for hidden mounting behind flush mount switches. Digital inputs are configurable for potential free push buttons and switches.
- + dimensions: 38 x 38 x 14 mm

## Sensor

<b>detection area</b>	vertically 360°
<b>coverage max.</b>	24 m across, 8 m frontal, 6,4 m sitting work
<b>mounting height min./ max./recommended</b>	2 m/10 m/2,5 m
<b>protection class</b>	IP20
<b>dimensions</b>	106 x 68 mm
<b>functions</b>	presence and motion detection, daylight control, semi automatic, full automatic, scene control, orientation light, guided light, group control, offset control.

## Parametrisation of the components

over Bluetooth by tablet/  
smartphone and the BEG DALILINK  
app (Android und iOS)

## Accessories for expansion

### Control point

LC-RX FLEX Office PBM, 84506009215  
DALI- push button module as slave for further  
control points

The master push button module is needed in every  
system (Bluetooth interface for configuration per app);  
expansion only with slave push button module.

### Sensor

LC-RX FLEX Office PD4N, 84506009217  
DALI sensor installed in ceiling for expansion

### Sensor mounting accessories

LC-RX FLEX Office PD4N-Box, 84506009218  
surface-mounted housing IP54 for built-in sensor

### Power supply

LC-RX FLEX Office PS-REG, 84506009220  
DALI power supply as rail-mounted device

A max. of 4 further control systems (sensor and/or push  
button module) can be used in the DALI line.

## System currents

for each DALI controller: 2 mA  
for each sensor PD4N: 7 mA  
for each button module: 7 mA

# netlife FLEX office COMPONENTS

## ► DALI multisensors

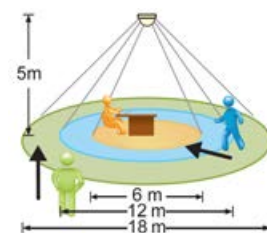


### LC-RX FLEX Office PD11

DALI suspended ceiling mount sensor



protection class:	IP20
detection area:	vertically 360°
coverage:	max. Ø 9 m across max. Ø 6 m frontal max. Ø 3 m sitting work
mounting height min./ max./recommended	2 m/5 m/2,5 m
dimensions:	Ø 52 x 48 mm



Pay attention to the system currents.

LC-RX FLEX Office PD11 | Art. no. 8450 6009 216 | € excl. VAT. 199.00

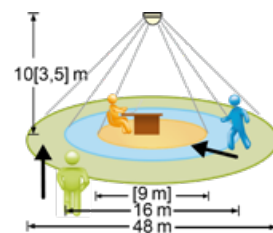


### LC-RX FLEX Office PD4N

DALI suspended ceiling mount sensor



protection class:	IP20
detection area:	vertically 360°
coverage:	max. Ø 24 m across max. Ø 8 m frontal max. Ø 6,4 m sitting work
mounting height min./ max./recommended	2 m/10 m/2,5 m
dimensions:	Ø 106 x 68 mm



Pay attention to the system currents.

LC-RX FLEX Office PD4N | Art. no. 8450 6009 217 | € excl. VAT. 228.00



### Mounting accessories: LC-RX FLEX Office PD4N Box

Mounting socket IP54 for ceiling mount sensor

protection class:	IP54
dimensions:(D x H)	109 x 19 mm
Colour of the housing	white

LC-RX FLEX Office PD4N Box | Art. no. 8450 6009 218 | € excl. VAT. 12.90



Hewlett Packard Enterprise,  
Dublin IE

# netlife FLEX office COMPONENTS

## ► Power supply



### LC-RX FLEX Office PS-DE

DALI power supply

IP20

protection class	IP20
	110-277 VAC 50/60 Hz
dimensions	240 x 26 x 26 mm
nominal current	100 mA
multimaster sensors or push button modules	max. 6

Pay attention to the system currents.

LC-RX FLEX Office PS-DE | Art. no. 8450 6009 219 | € excl. VAT. 232.00



### LC-RX FLEX Office PS-REG

Power supply/Accessories

DALI power supply for DIN rail mount in distributors

IP20

protection class	IP20
	230VAC 50/60 Hz
dimensions	90 x 72 x 64 mm (4TE)
nominal current	210 mA
multimaster sensors or push button modules	max. 10

Pay attention to the system currents.

LC-RX FLEX Office PS-REG | Art. no. 8450 6009 220 | € excl. VAT. 323.00



## ▶ Button coupler module



### LC-RX FLEX Office PBM-BLE

#### Pushbutton coupler

DALI pushbutton module with 4 binary inputs and integrated Bluetooth gateway for hidden mounting behind flush mount switches. Digital inputs are configurable for potential free pushbuttons and switches.

dimensions 38 x 38 x 14 mm

LC-RX FLEX Office PBM-BLE | Art. no. 8450 6009 214 | € excl. VAT. 199.00



### LC-RX FLEX Office PBM

#### Pushbutton coupler

DALI pushbutton slave module with 4 binary inputs for hidden mounting behind flush mount switches. Digital inputs are configurable for potential free pushbuttons and switches.

dimensions 38 x 38 x 12 mm

LC-RX FLEX Office PBM | Art. no. 8450 6009 215 | € excl. VAT. 189.00

# netlife FLEX

# office STARTER KITS



## LC-RX FLEX Office S Kit



### Starter kit

Consisting of a DALI power supply for installation in suspended ceilings or ceiling mount, a DALI push button module with 4 binary inputs and integrated Bluetooth gateway, as well as a ceiling sensor. The kit is suitable for applications in small and mid-size offices with a double workplace.

Accessories for system extension available.

LC-RX FLEX Office S Kit | Art. no. 8450 6009 212 | € excl. VAT. 633.00



### DALI power supply

Operating voltage	110-277VAC 50/60 Hz
dimensions	240 x 26 x 26 mm
protection class	IP20
nominal current	100 mA

Max. 6 multimaster sensors or push button modules connectable.

### DALI pushbutton module

with 4 binary inputs and integrated Bluetooth gateway for hidden mounting behind flush mount switches. Digital inputs are configurable for potential free push buttons and switches.

A max. of 6 multimaster sensors or push button modules and a max. of 25 DALI devices can be connected

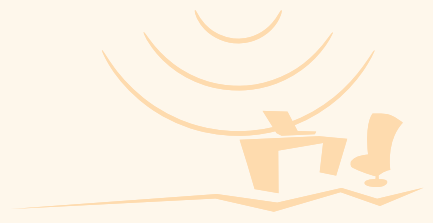
### DALI suspended ceiling mount sensor

detection area	vertically 360°
coverage:	max. Ø 9 m across, max. Ø 6 m frontal, max. Ø 3 m sitting work
mounting height min./ max./recommended:	2 m/5 m/2,5 m

protection class IP20

dimensions Ø 52 x 48 mm

Functions presence and motion detection, daylight control, semi automatic, full automatic, scene control, orientation light, guided light, group control, offset control. Parametrisation of the components over Bluetooth by tablet/smartphone and the BEG DALILINK app (Android und iOS).



## LC-RX FLEX Office L Kit

### Starter kit

Consisting of a DALI power supply for installation in suspended ceilings or ceiling mount, a DALI push button module with 4 binary inputs and integrated Bluetooth gateway, as well as a ceiling sensor with large detection area. The kit is suitable for applications in large and mid-size offices with several double workplace.



LC-RX FLEX Office L Kit | Art. no. 8450 6009 213 | € excl. VAT. 669.00



### DALI power supply

<b>Betriebsspannung</b>	110-277VAC 50/60 Hz
<b>dimensions</b>	240 x 26 x 26 mm
<b>protection class</b>	IP20
<b>nominal current</b>	100 mA

Max. 6 multimaster sensors or push button modules connectable

### DALI push button module

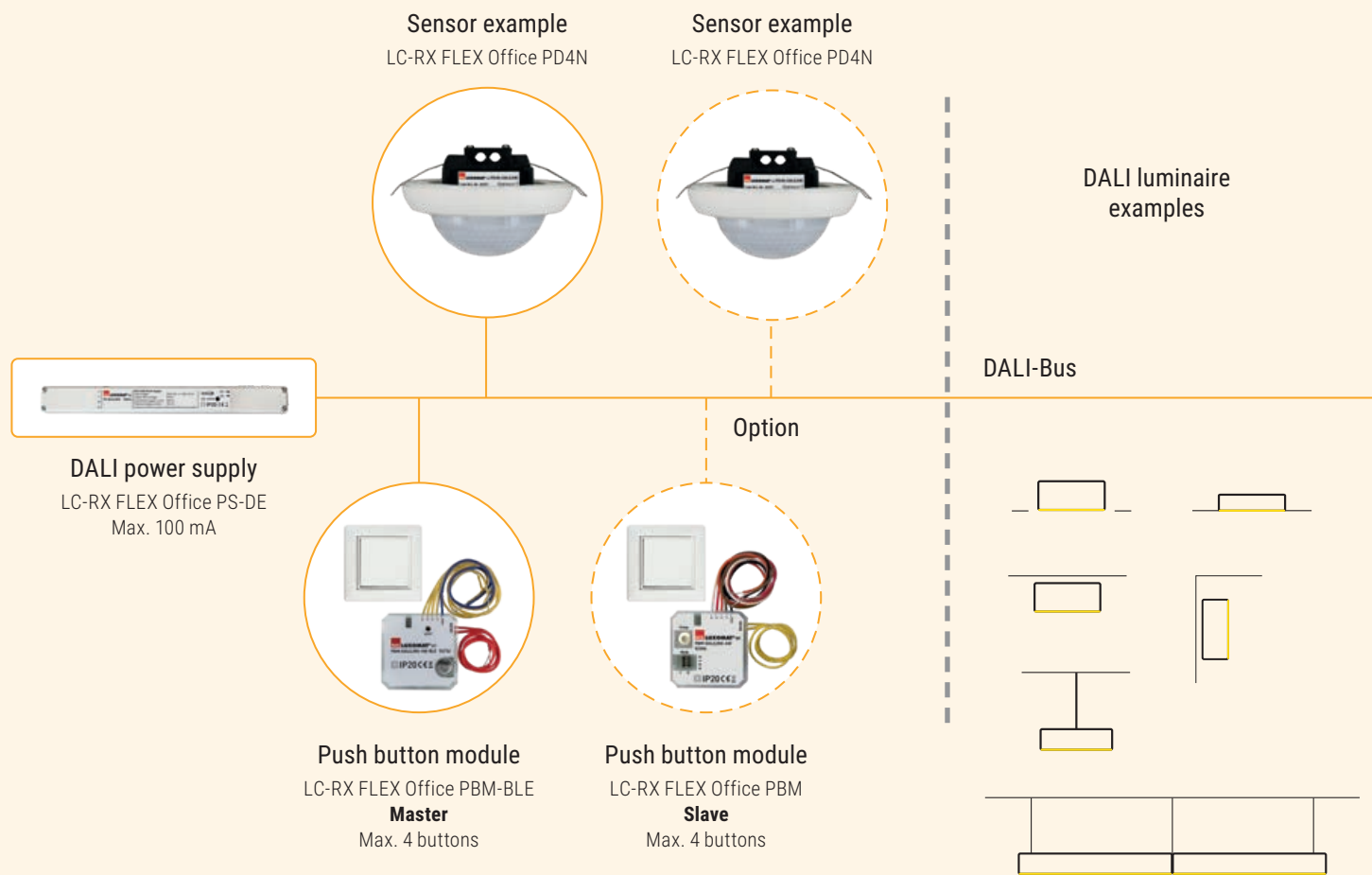
with 4 binary inputs and integrated Bluetooth gateway for hidden mounting behind flush mount switches. Digital inputs are configurable for potential free push buttons and switches

### DALI suspended ceiling mount sensor

<b>detection area</b>	vertically 360°
<b>coverage:</b>	max. Ø 24 m across, max. Ø 8 m frontal, max. Ø 6,4 m sitting work
<b>mounting height min./ max./recommended:</b>	2 m / 10 m / 2,5 m
<b>protection class</b>	IP20
<b>dimensions</b>	Ø 106 x 68 mm
<b>Functions</b>	presence and motion detection, daylight control, semi automatic, full automatic, scene control, orientation light, guided light, group control, offset control. Parametrisation of the components over Bluetooth by tablet/smartphone and the BEG DALILINK app (Android und iOS).

# netlife FLEX office FOR OFFICE LIGHTING

## ► Overview of exemplary system



# Luminaire ranges for workstation lighting

## Examples



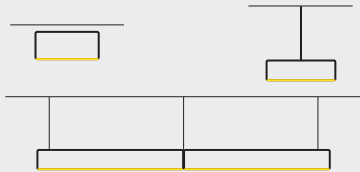
UGR 19 3000 cd/m<sup>2</sup> L90 B10 50.000h Moti

UGR 19 3000 cd/m<sup>2</sup> Moti B3

UGR 13 100 cd/m<sup>2</sup> Moti B3

“kayak - your office  
“Motiv”

Types of installation:



Lighting technology:

- Micro-prismatic diffuser bottom / top clear; PMMA plastic
- Lighting characteristic direct distribution / indirect distribution for ceiling lighting

Housing:

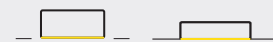
- Frame made of painted extruded aluminium profile, visible installation height 10/24mm

Lamp:

- LED 50000h L90/B10 (Tq 25°C)
- CRI ≥ 80; 3000K / 4000K

“teno – soft flattering  
light”

Types of installation:



Lighting technology:

- Micro-prismatic diffuser; PMMA plastic
- Lighting characteristic direct distribution

Housing:

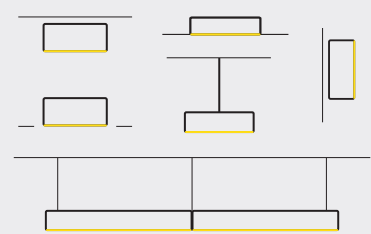
- Sheet steel

Lamp:

- LED 50000h L80/B10 (Tq 25°C)
- CRI ≥ 90 / 2700K-6500K
- CRI ≥ 80; 3000K / 4000K

“agila – less glare is  
not possible”

Types of installation:



Lighting technology:

- Single micro louvre
- Lighting characteristic direct/indirect distribution

Housing:

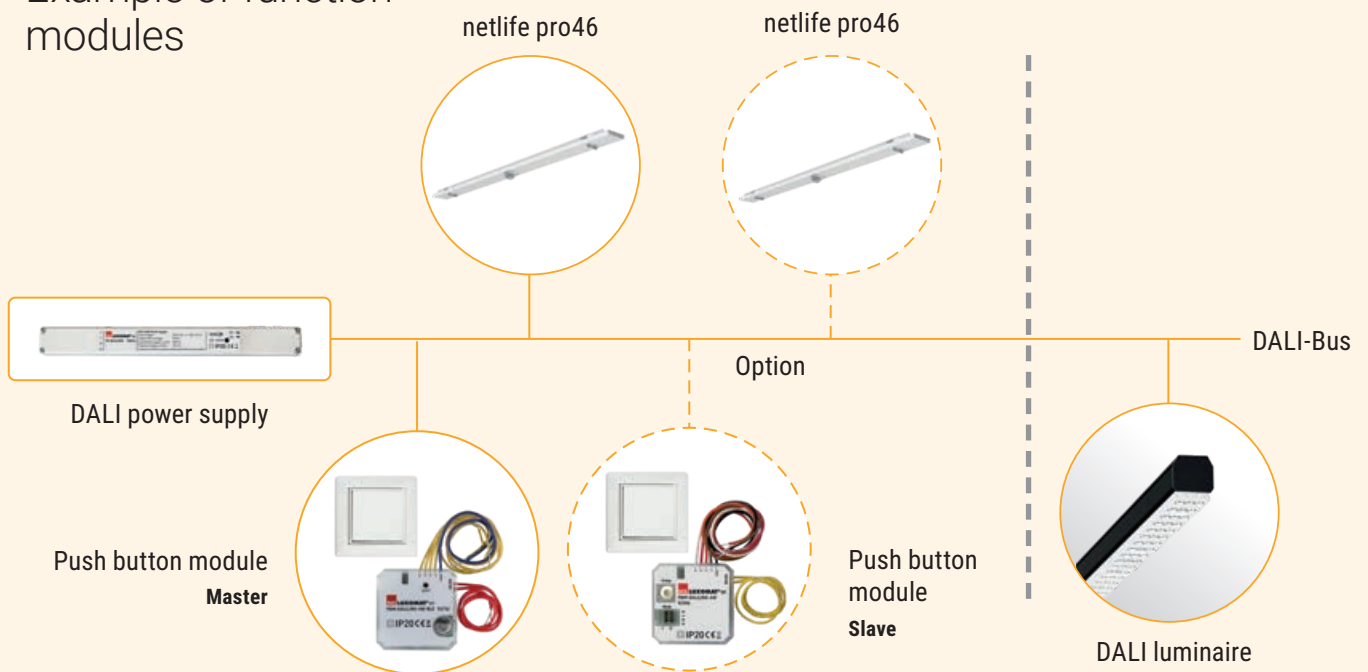
- Sheet steel

Lamp:

- LED 50000h L80/B10 (Tq 25°C)
- CRI ≥ 80; 3000K / 4000K

# netlife FLEX office FOR RAIL SYSTEMS

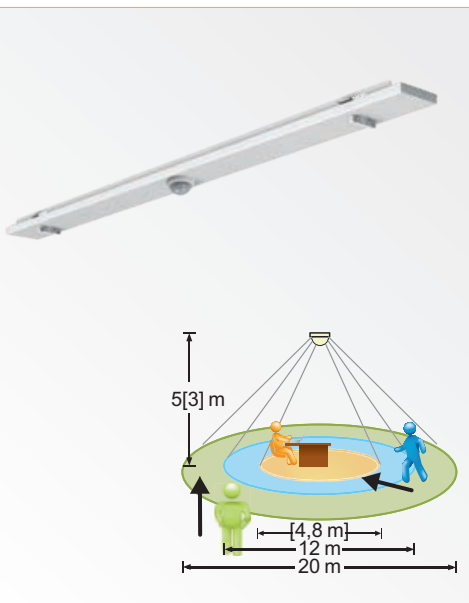
## ▶ Example of function modules



LC-RX FLEX Office for rail system



## ▶ Function module for SDT and SRT rail system



Type netlife pro46



**Housing**

- + From pre-galvanised sheet steel coated with polyester resin
- + Tool-free fastening by means of two integrated rotary catches
- + Variable positioning in the mounting rail

**Switching**

- + NETLIFE DALI LINK
- + Device mount with tool-free phase pre-selection and locating finger

**function** Motion detection, corridor function, guided light, presence detection, daylight control, manual dimming

Function module netlife pro46 | Article no. BTO (project-based configuration)



Willy Nassens  
Vimmerik NL

## Image index

Page

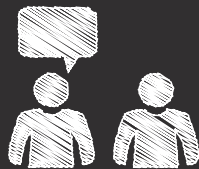
- |    |   |
|----|---|
| 1  | benik.at · stock.adobe.com  |
| 2  | neiezhmakov · stock.adobe.com   |
| 4  | fizkes · stock.adobe.com  |
|    | Jörg Wenderoth, Volker Jakob Industrievertretungen, Baunatal DE · Orthopädische Praxis, Fritzlar DE |
|    | Inga Pass, Köln DE · Goldener Ring, Düsseldorf DE   |
| 5  | Detlef Podehl, Dortmund DE · Reinoldi Sekundarschule, Dortmund DE                                   |
| 6  | andreadonetti · 123rf   |
| 15 | Daithi Taylor, Enfield, IE · Hewlett Packard Enterprise, Dublin IE                                  |
| 23 | Willy Naessens, Kantoor Amsterdam NL  |
| 24 | ArchMen · stock.adobe.com   |

### Want to find out more?

Use our all-round service:

**+49 (0) 95 25 89-260**

 PDF



# REGIOLUX

Regiolux GmbH  
Hellinger Straße 3  
D 97486 Königsberg  
T +49 9525 89 0  
info@regiolux.de  
www.regiolux.de

For more information, visit  
**www.regiolux.de**

Regiolux @ Social Media

