

RXPERIENCE DAYs

lichtwerk

- Praxisbeispiele und Tipps
- Lichtwerkzeuge für effektives Arbeiten
- Von der Entwicklung zum Produkt:

Kunstgalerie



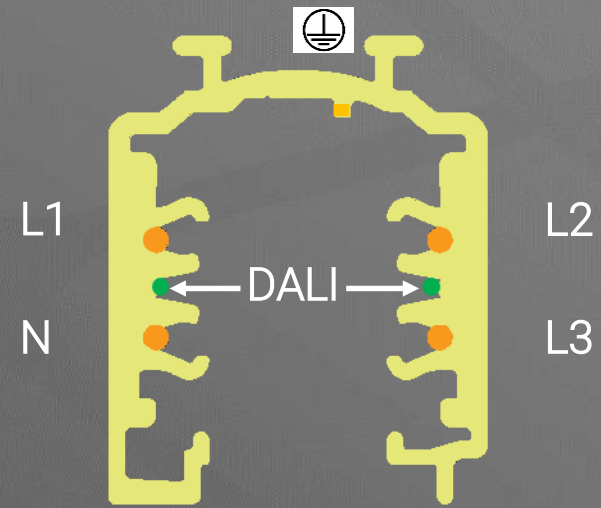
Kunstgalerie



Kunstgalerie



DPSN



Kunstgalerie



CASAMBI



Kunstgalerie

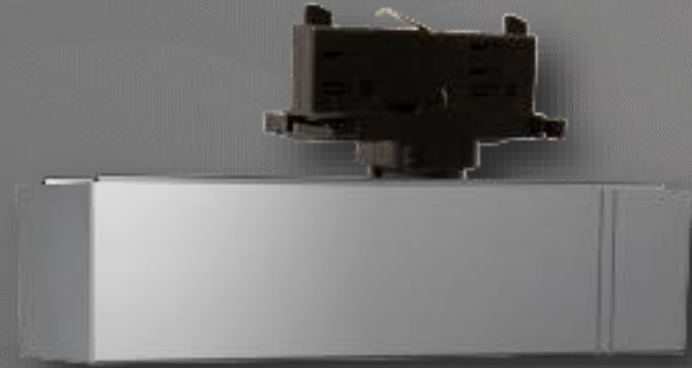


CASAMBI

Kunstgalerie



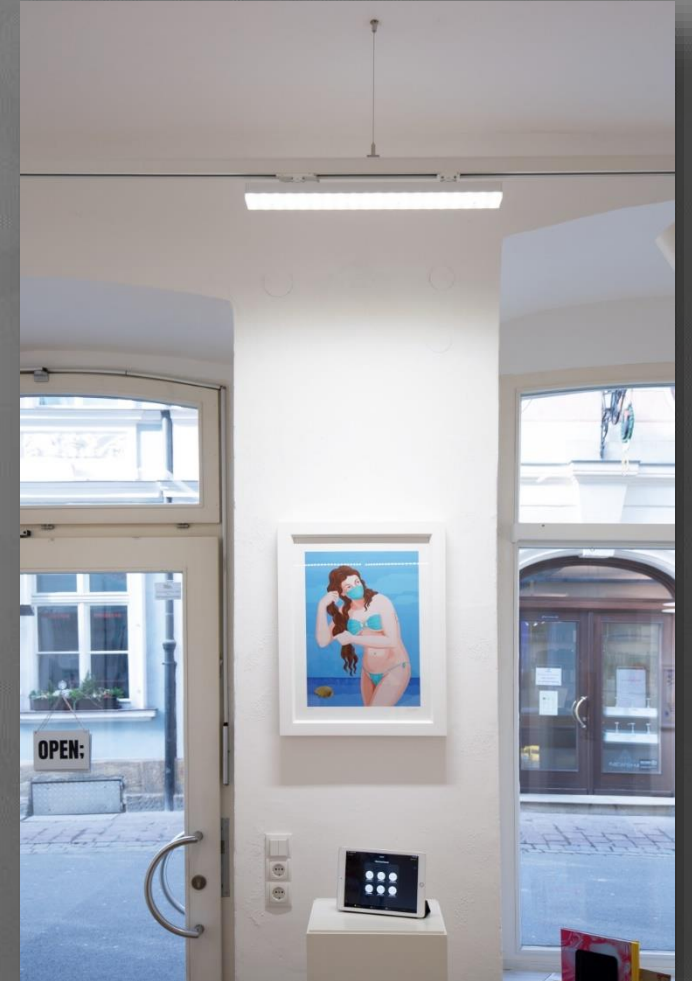
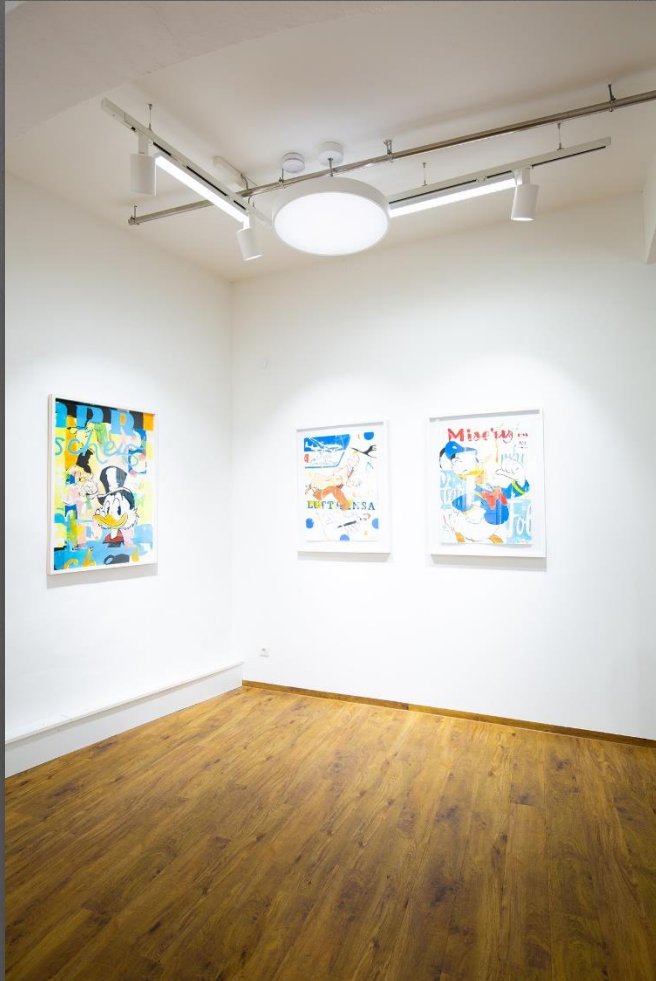
CASAMBI



Kunstgalerie



Kunstgalerie



Musikschule Hammelburg



Musikschule Hammelburg



Architekturbüro



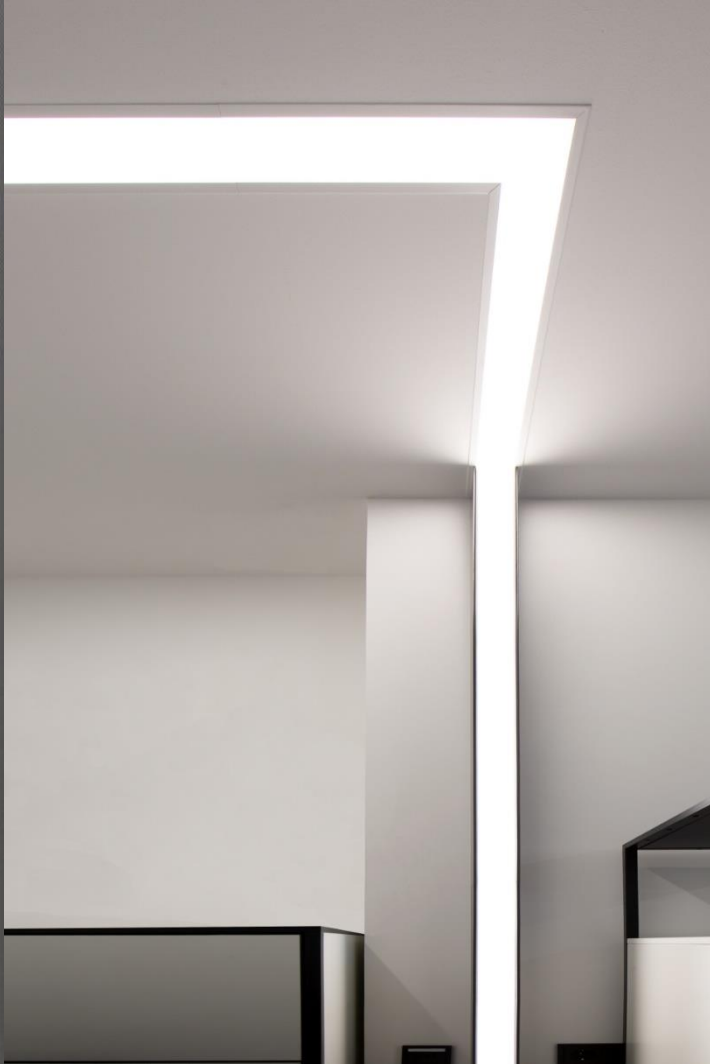
Architekturbüro



Musikschule Hammelburg



Einbaukanal fino



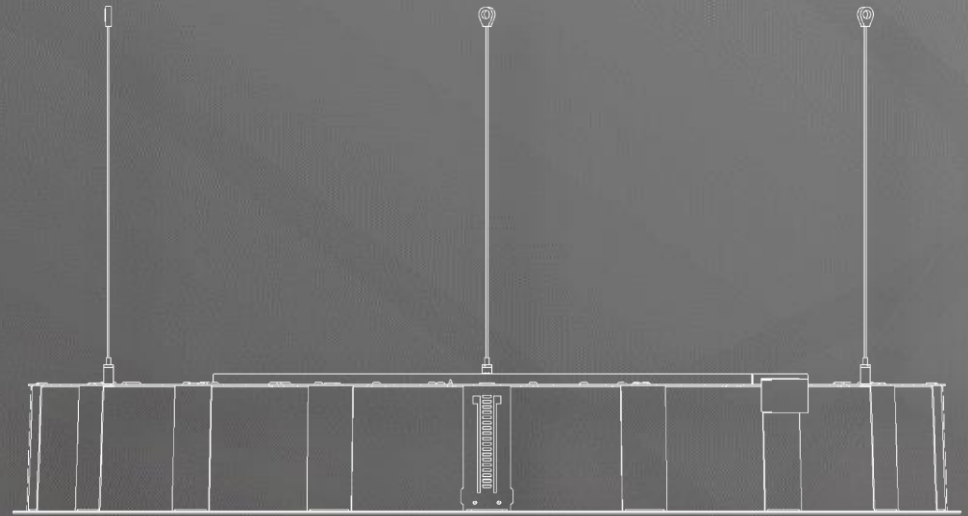
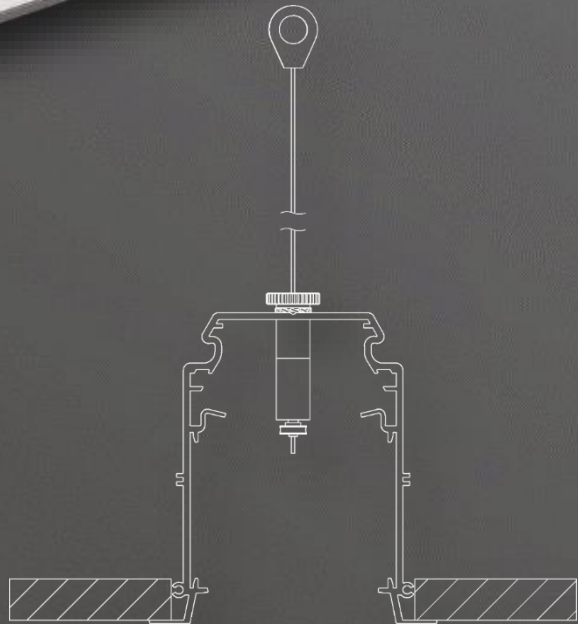
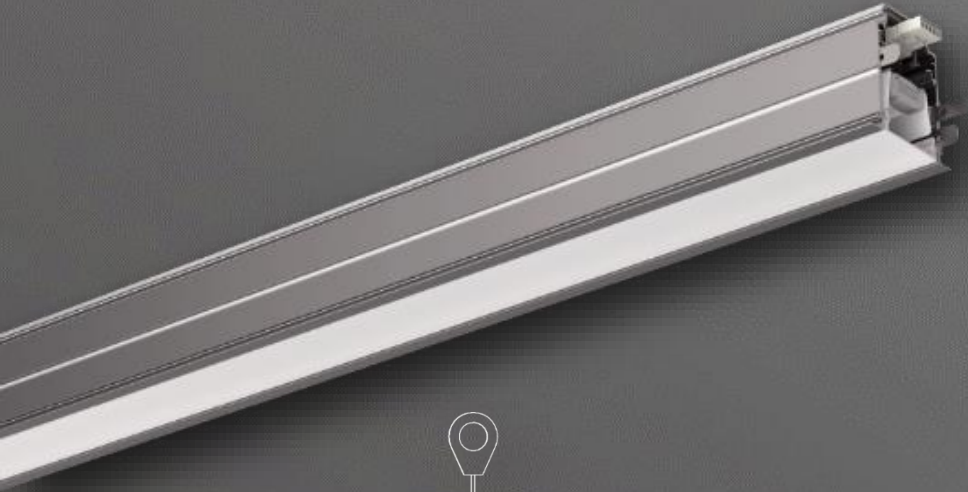
Einbaukanal fino



Einbauleuchte lopia



Einbaukanal fino



Pendelleuchte ciros



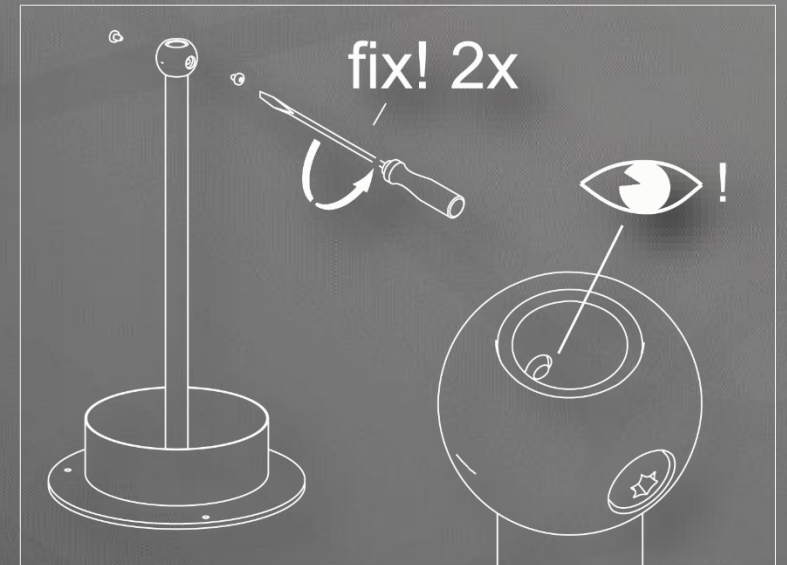
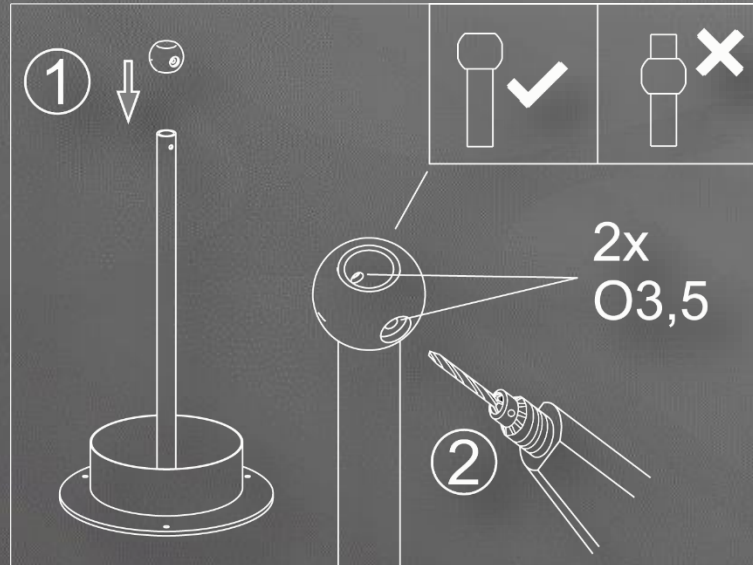
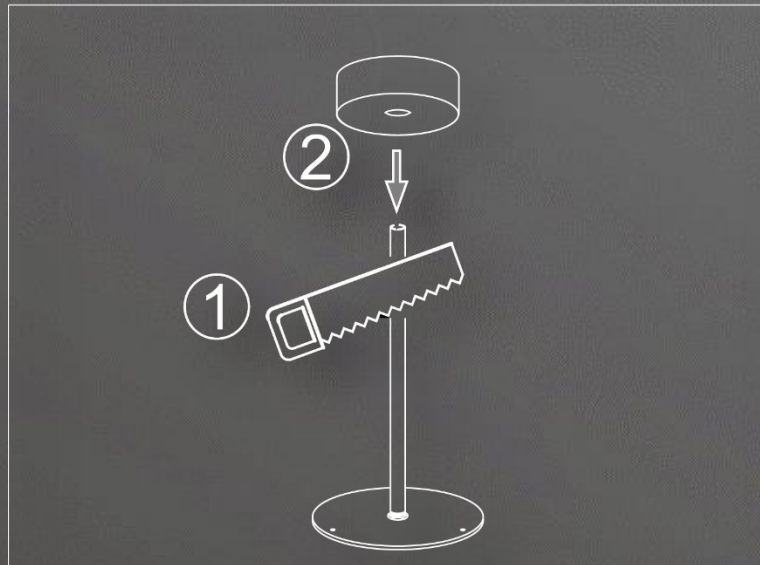
Pendelleuchte ciros



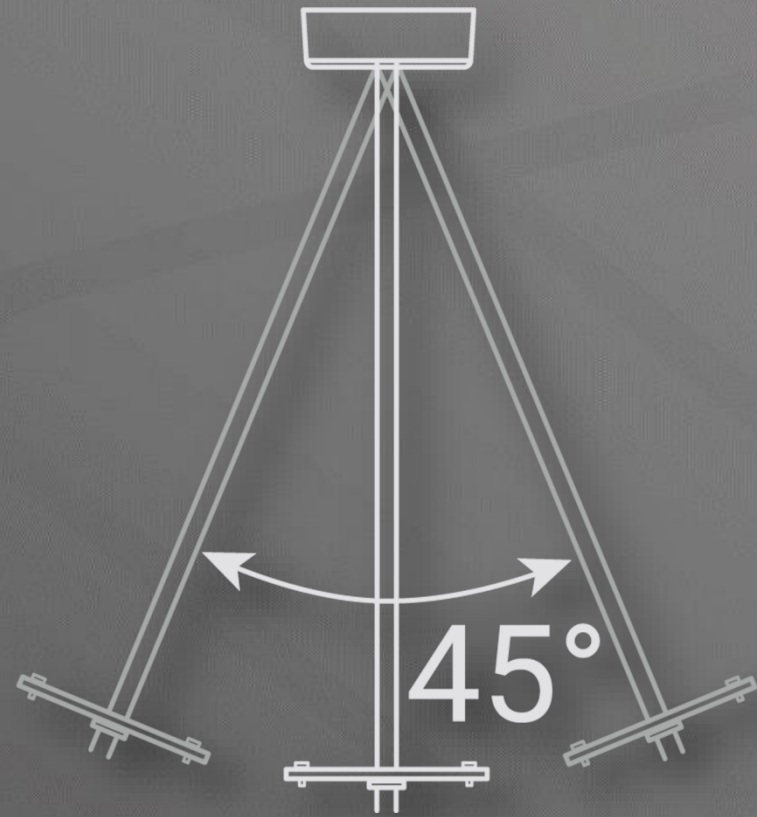
Pendelleuchte ciros



Pendelleuchte ciros



Pendelleuchte ciros



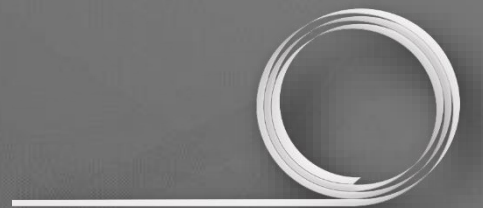
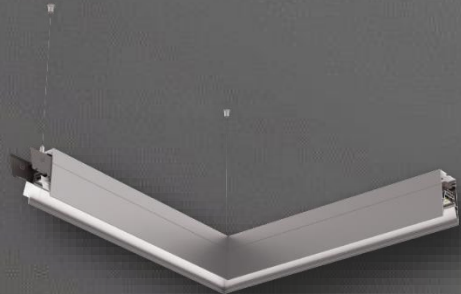
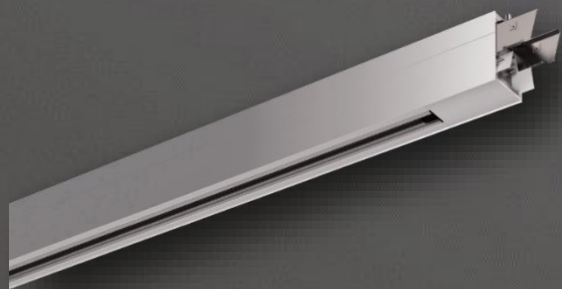
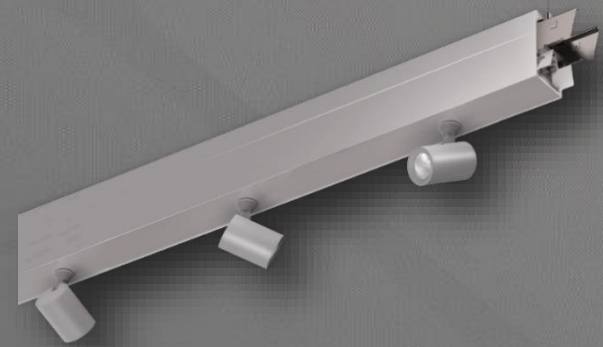
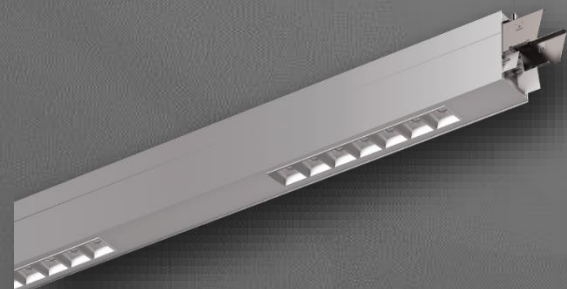
Pendelleuchte ciros



InnoLabs Görlitz



serio



serio



Lichtwerkzeuge

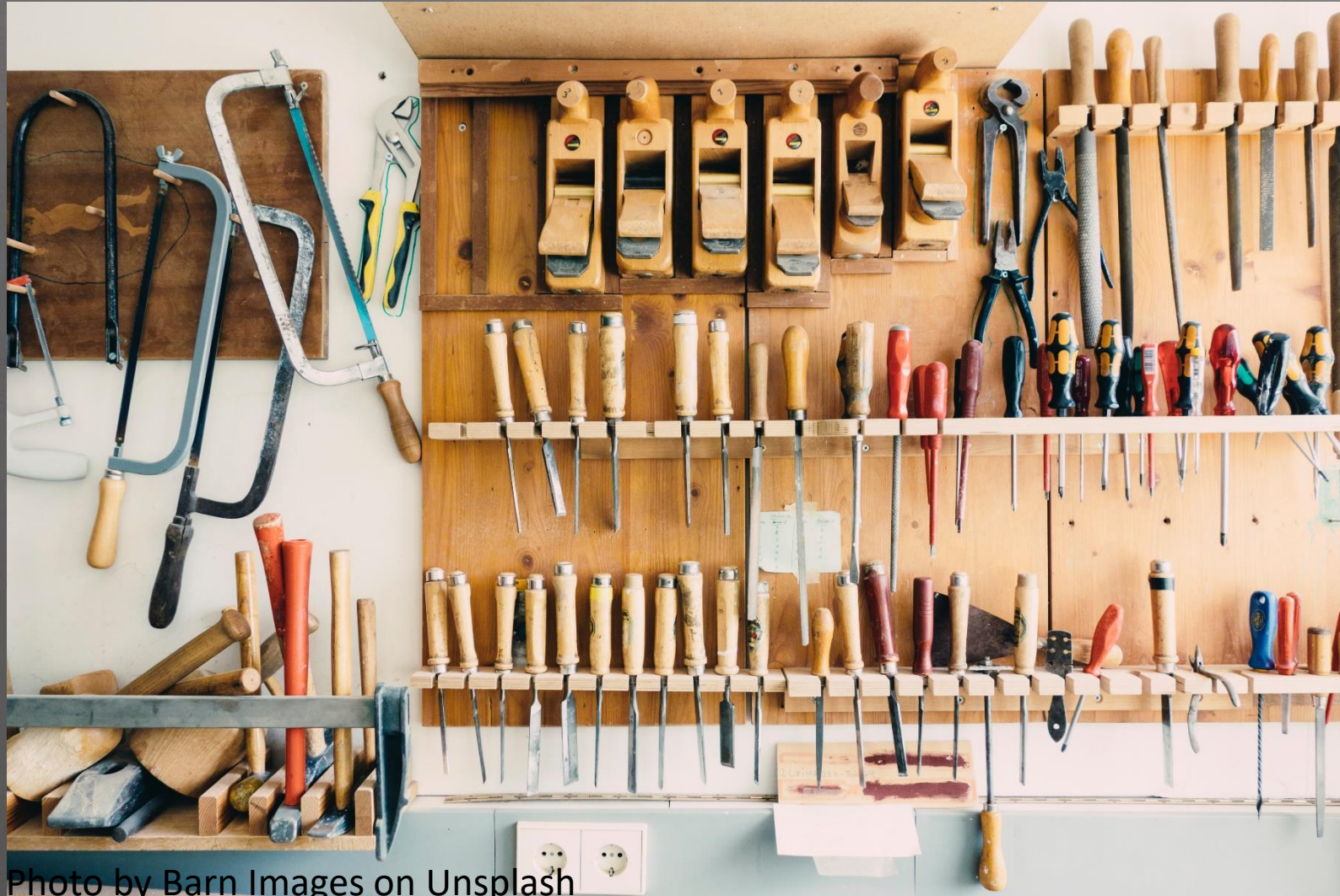
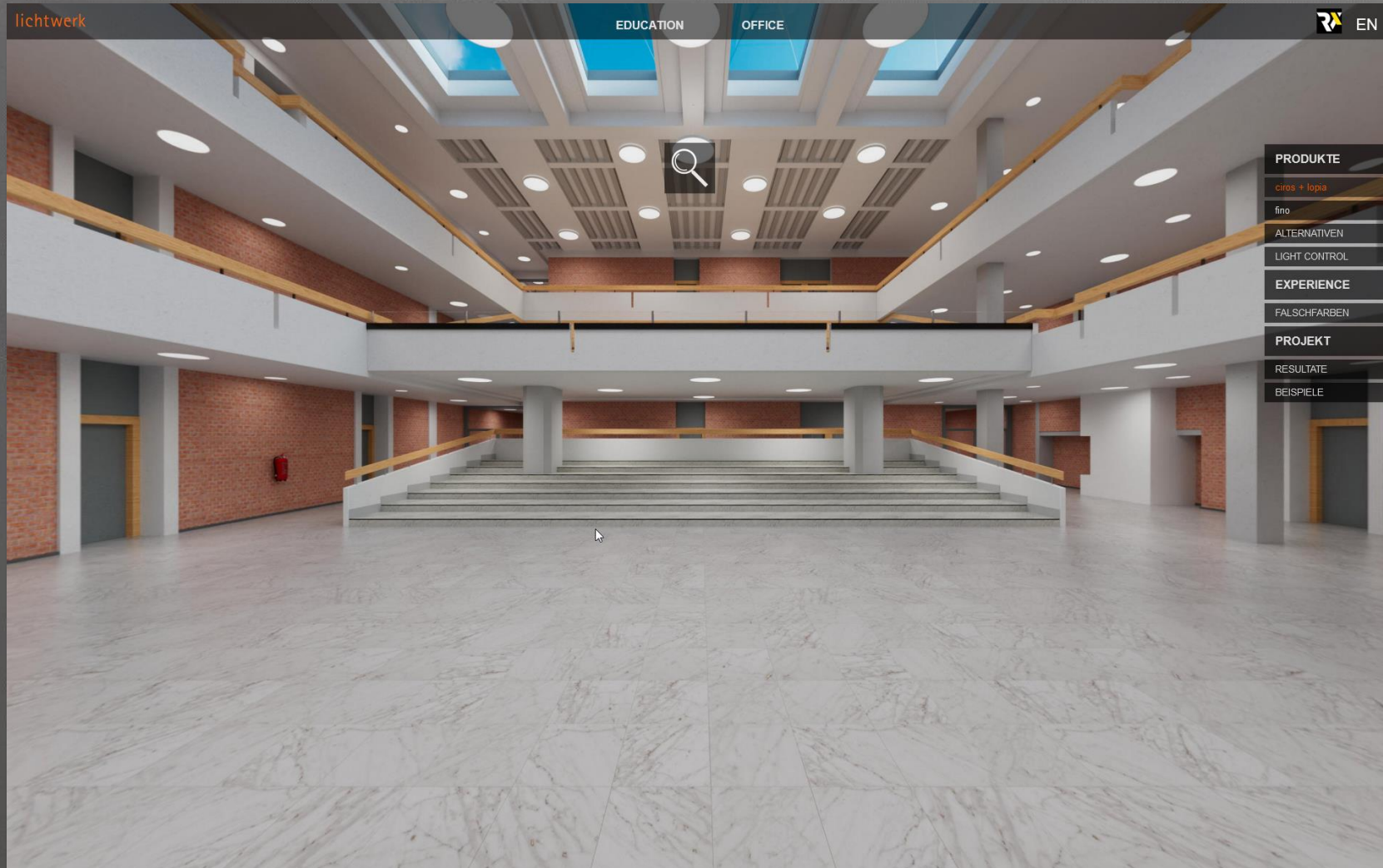
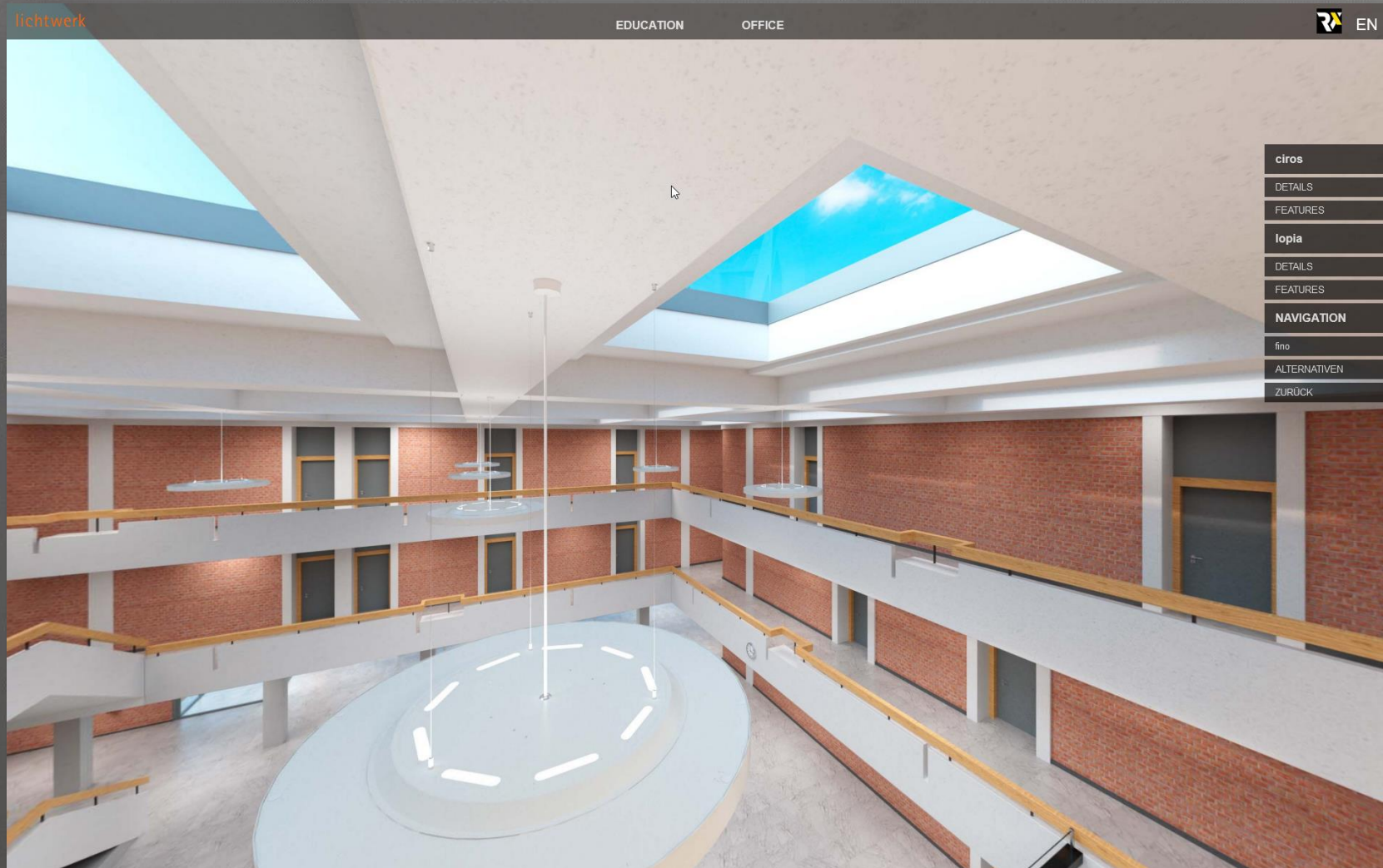


Photo by Barn Images on Unsplash

Lichtwerkzeuge



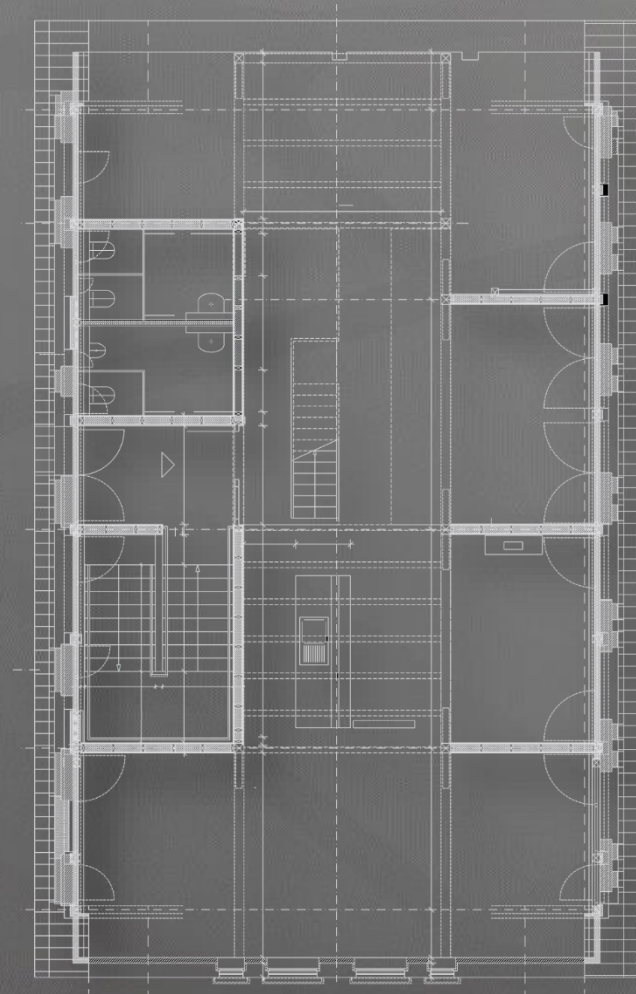
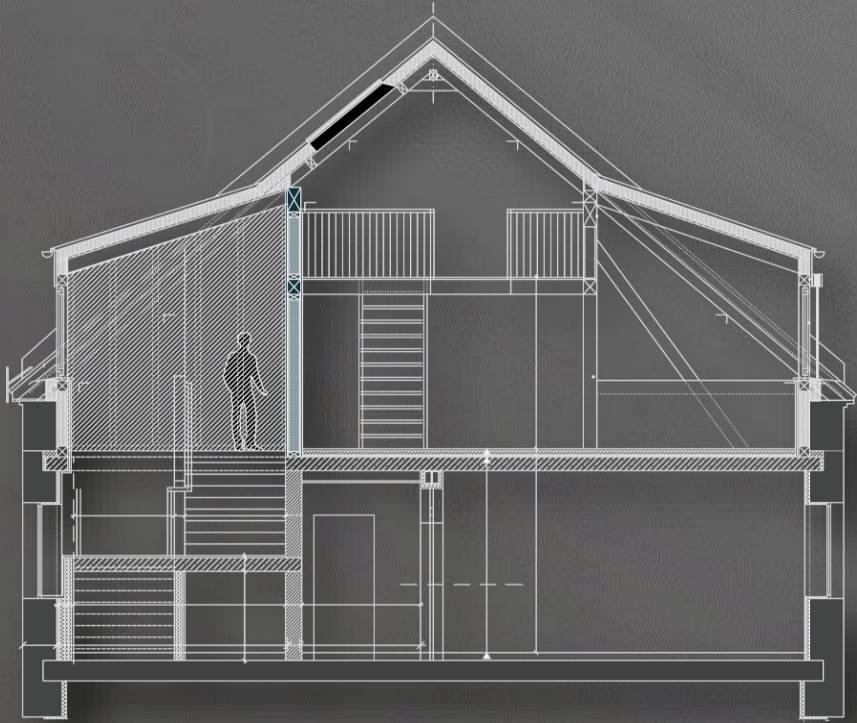
Lichtwerkzeuge



Lichtwerkzeuge



Lichtwerkzeuge



Konfigurator

lichtwerk
inspired by light

serio Konfigurator

EN

STARTEN

Individuelle Lichtkonzepte:
Einfach Gestalten.

KONFIGURATION STARTEN

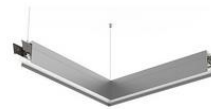
KONFIGURATIONSNUMMER

Aufrufen



ENDLOSDIFFUSOR

Lichtsysteme ohne Stösse des
Diffusors bis 20m



BELEUCHTETE ECKEN

Durchgehend beleuchtete
Lichtsysteme bis in die Ecken



MIKROZELLEN RASTER

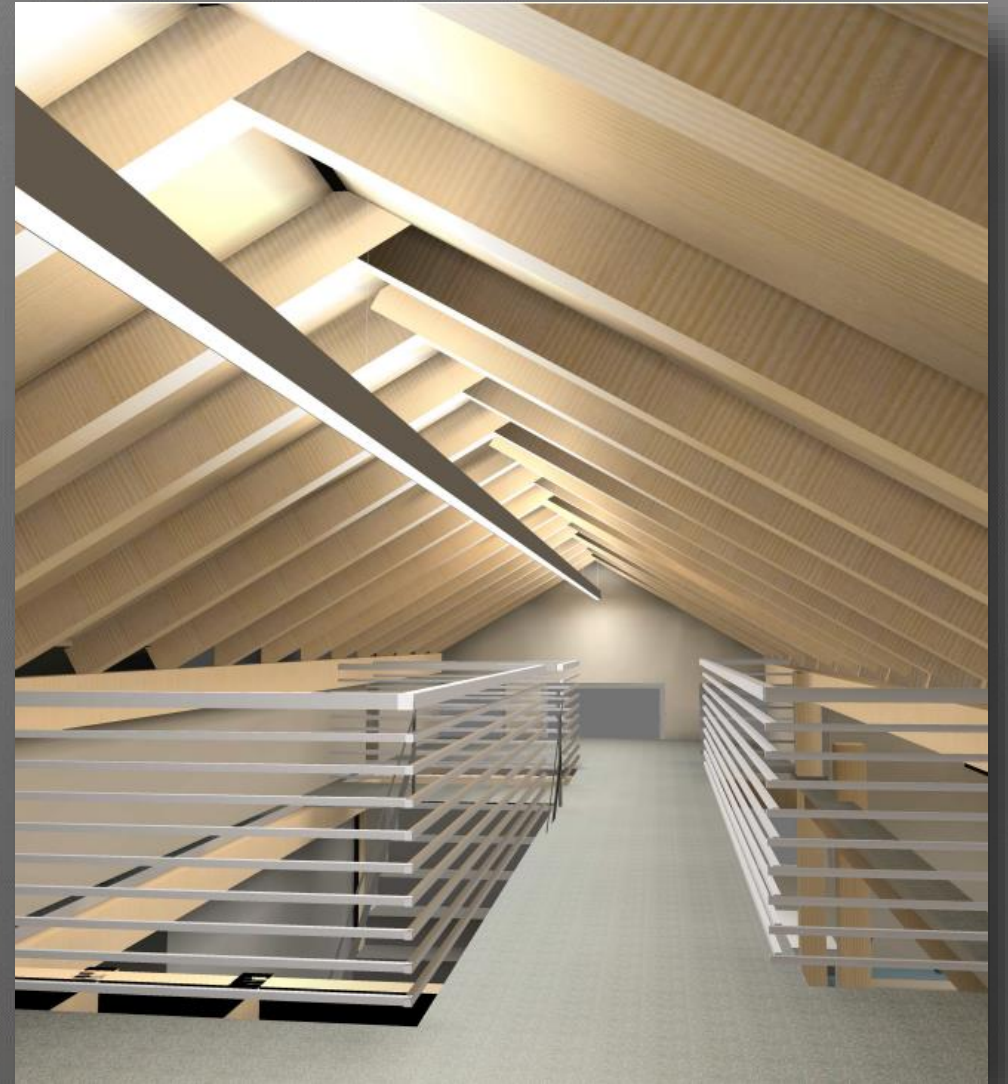
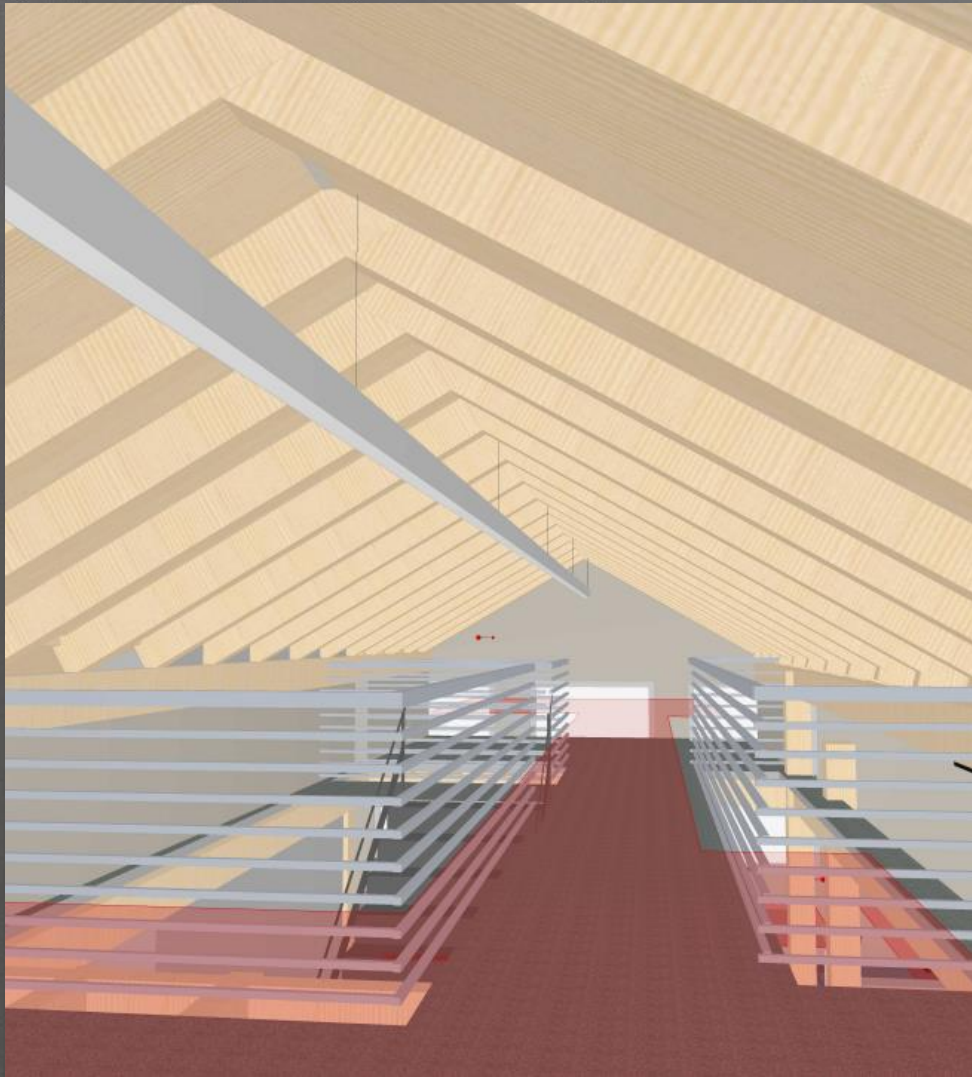
Uneingeschränkt tauglich für
Bildschirmarbeitsplätze



SPOTLIGHTS

Stromschienen-Spots frei
integrierbar

InnoLabs Görlitz

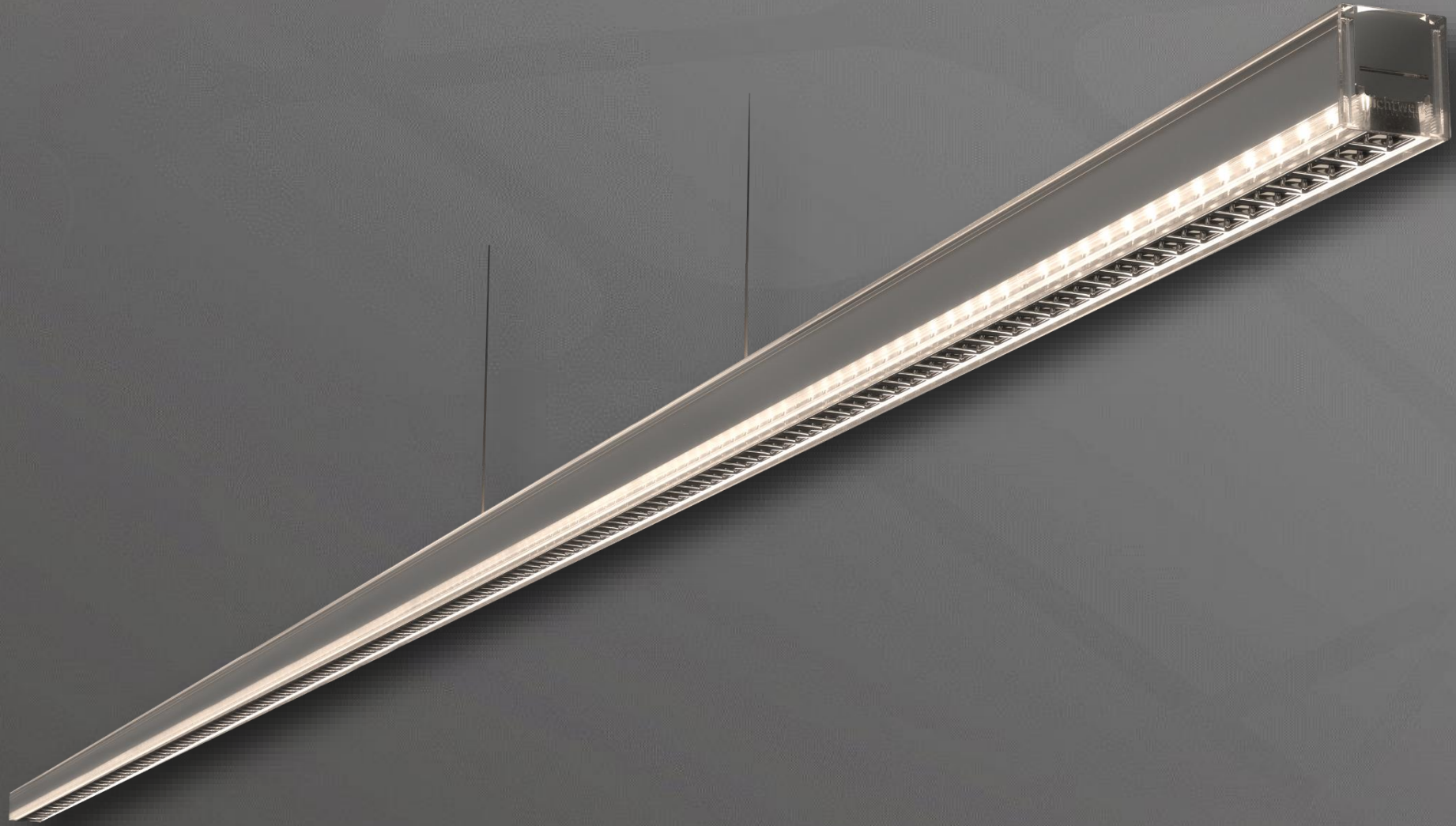


InnoLabs Görlitz



by klir
lichtwerk

klir



klir

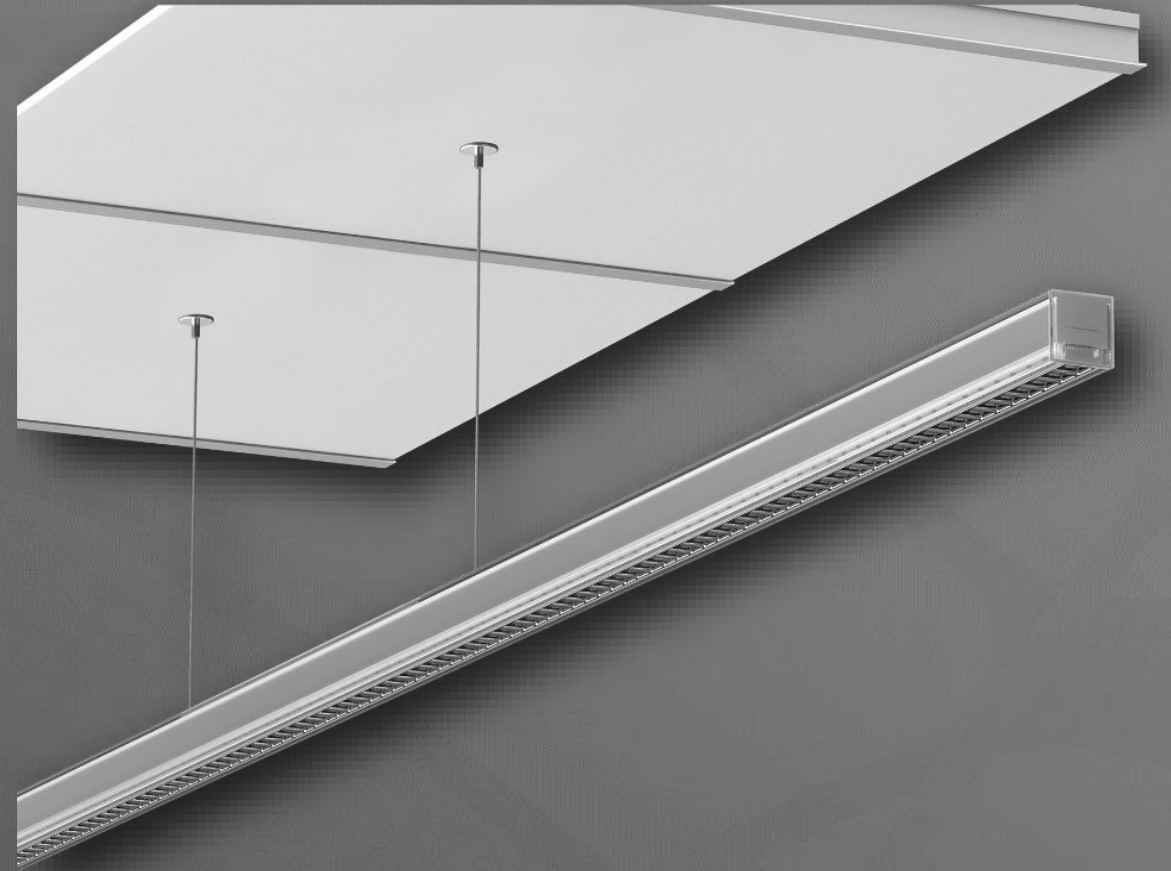
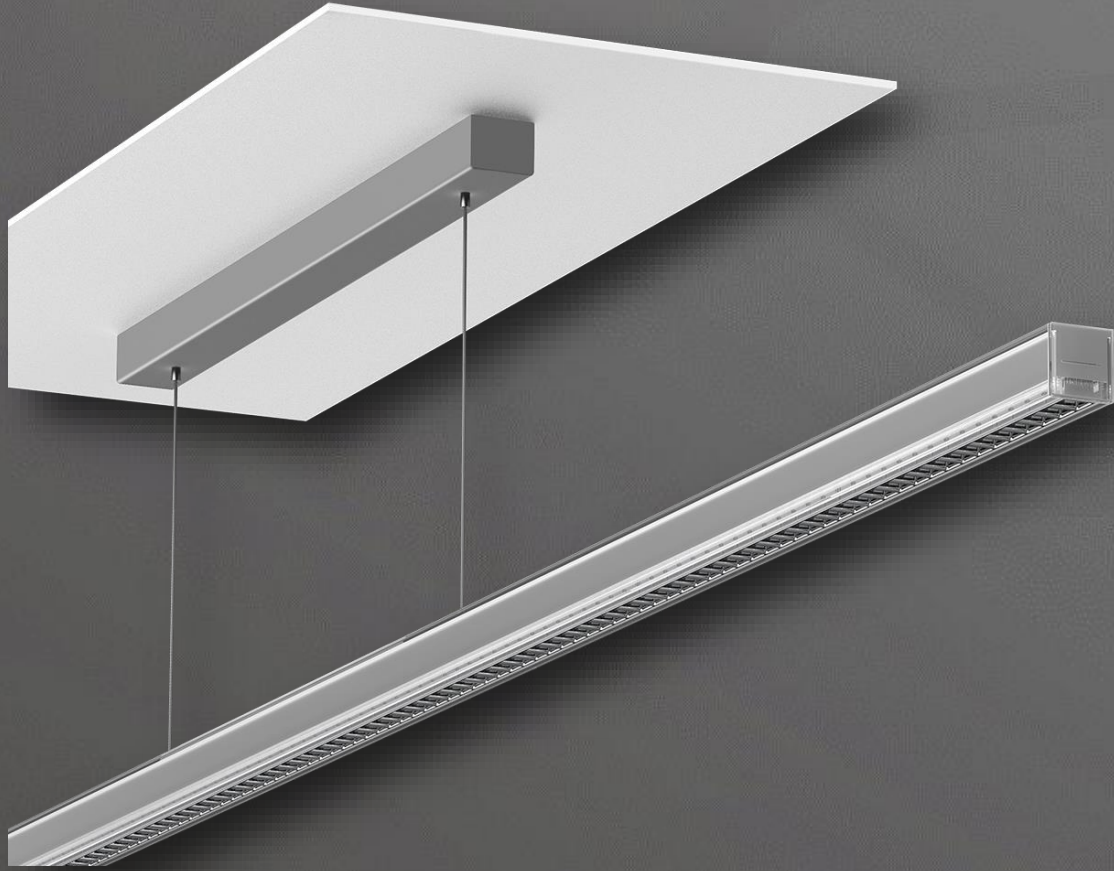


klir

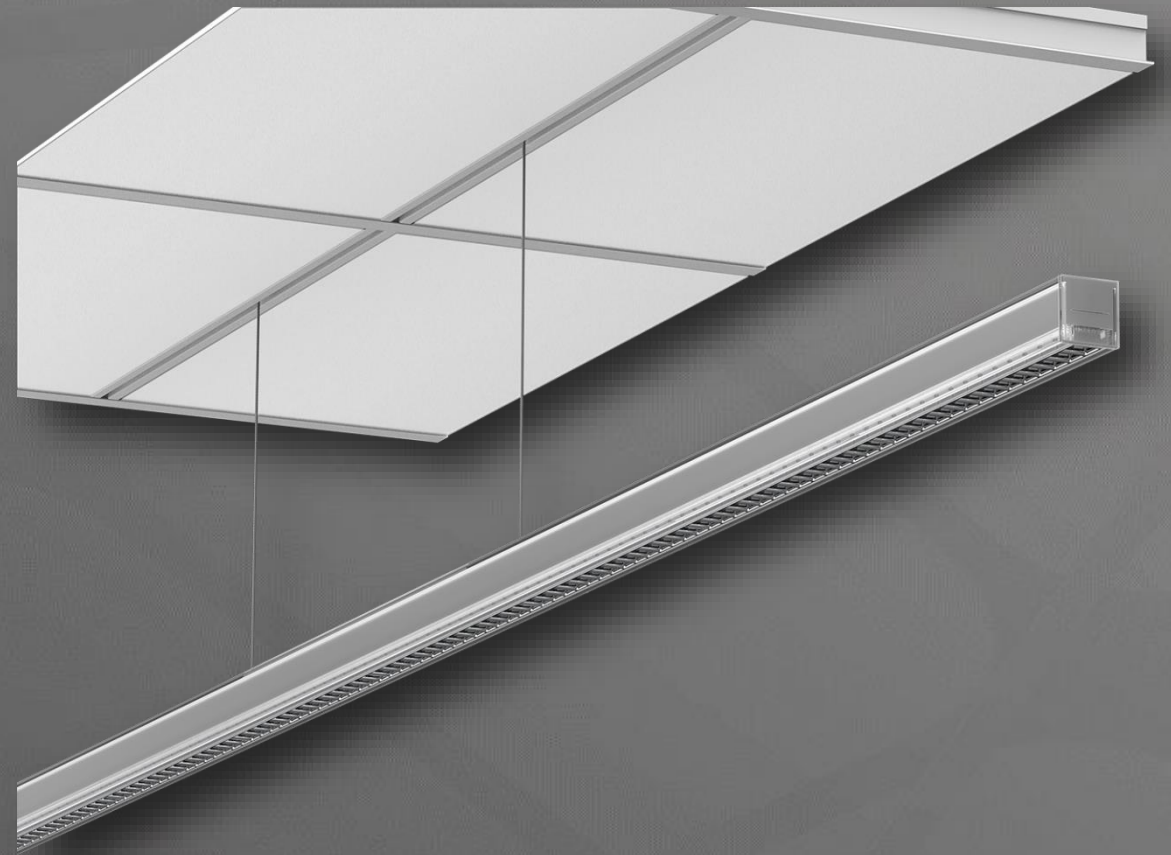
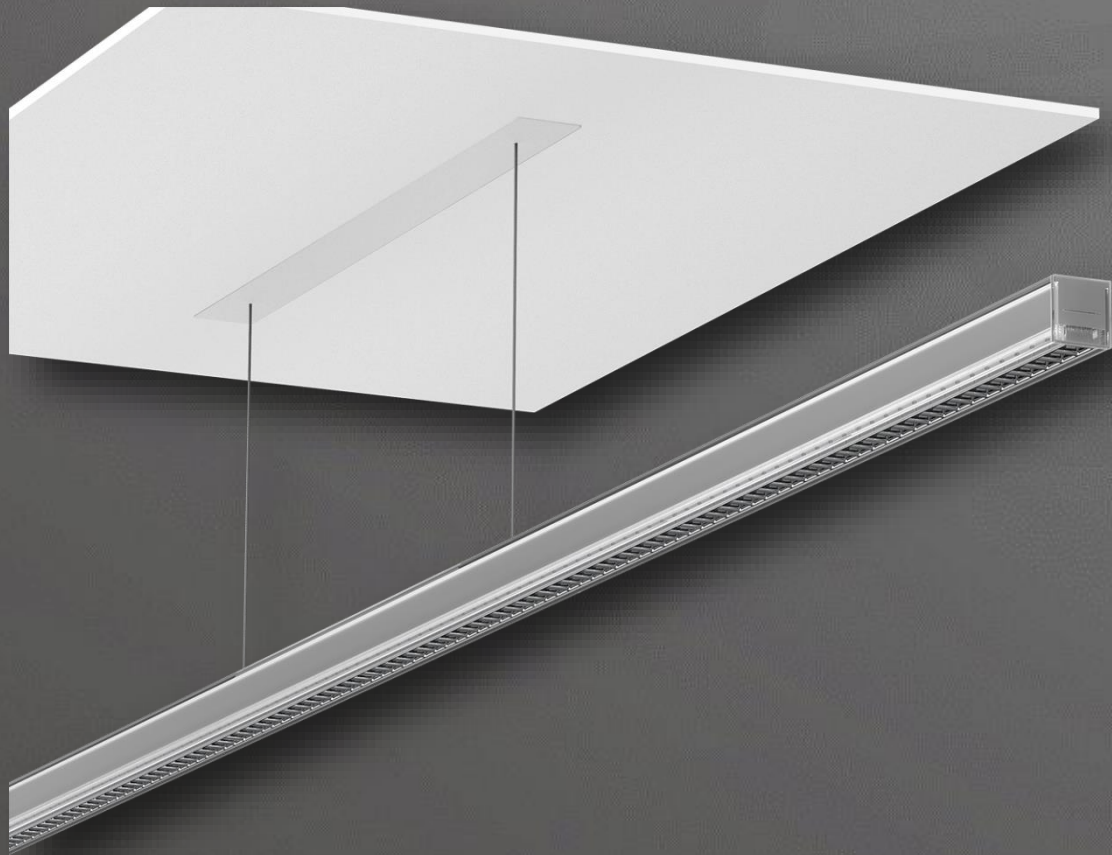


klir

klir



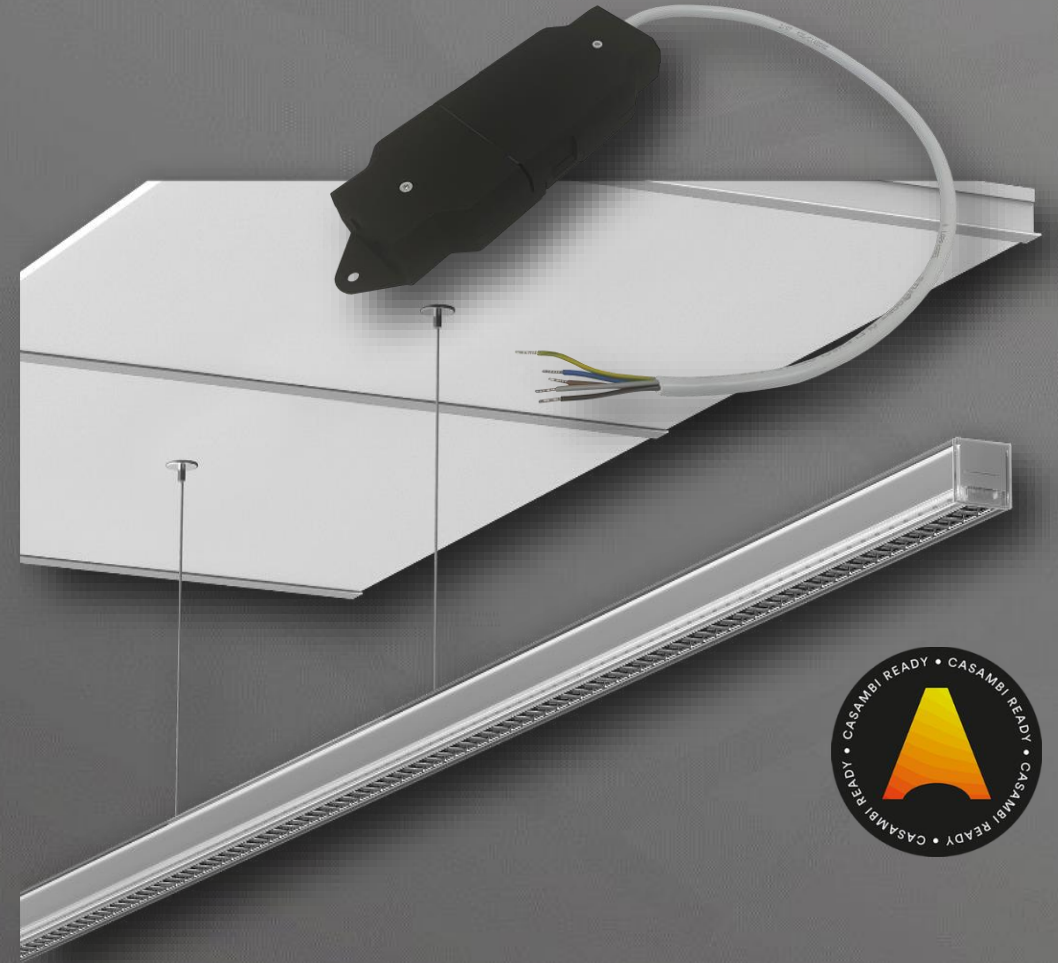
klir



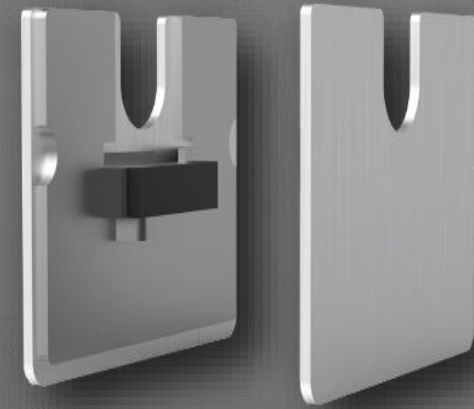
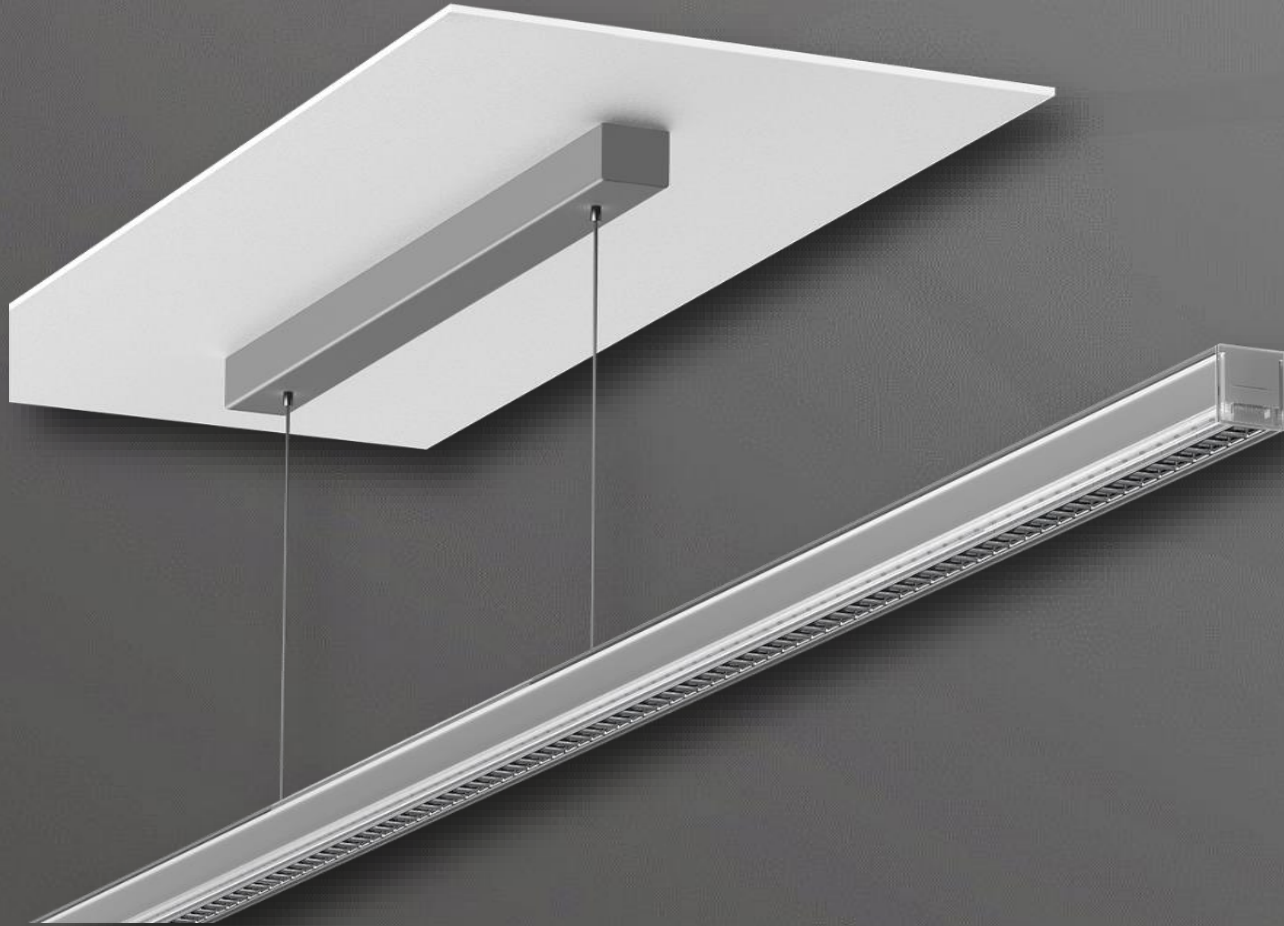
klir



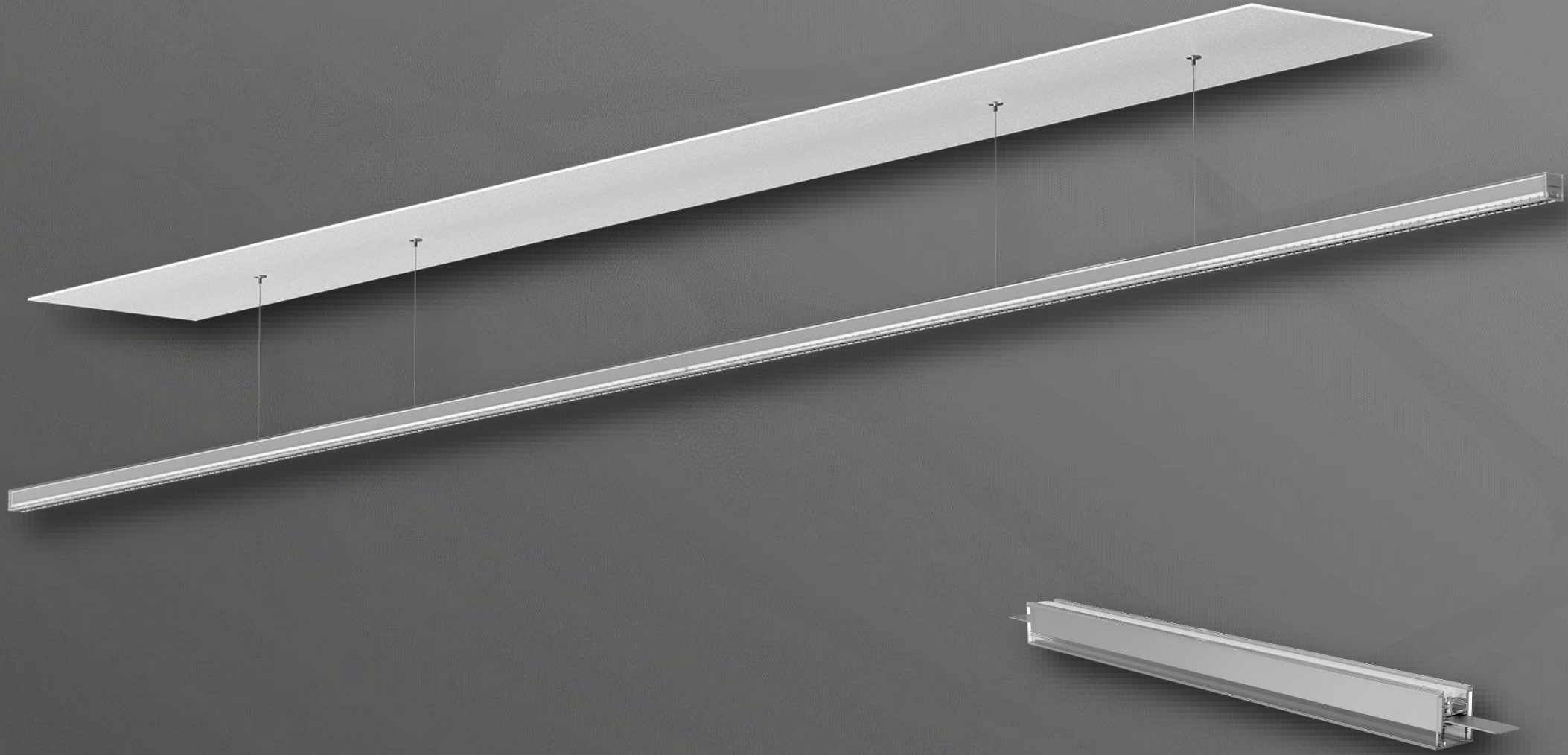
CASAMBI



klir Anbau Montage



klir Lichtband Montage

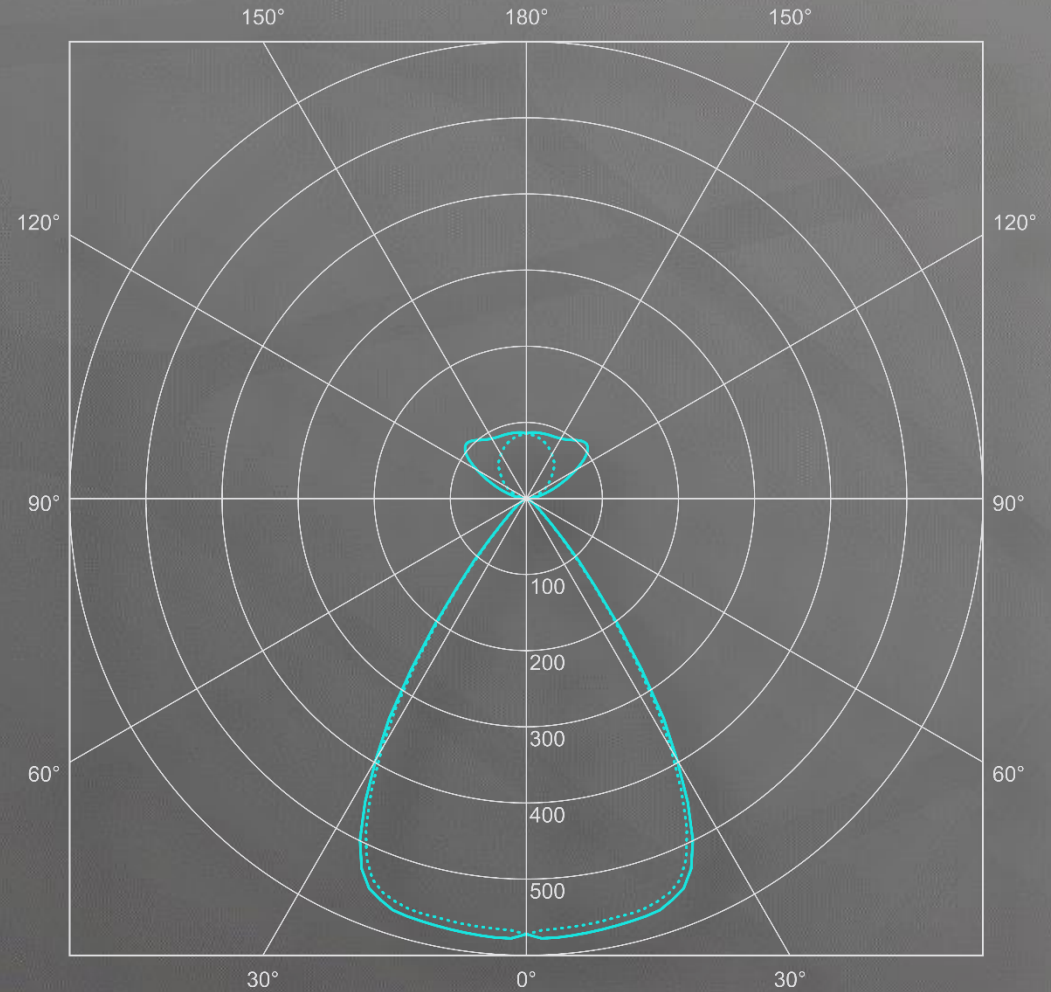




CRI > 90



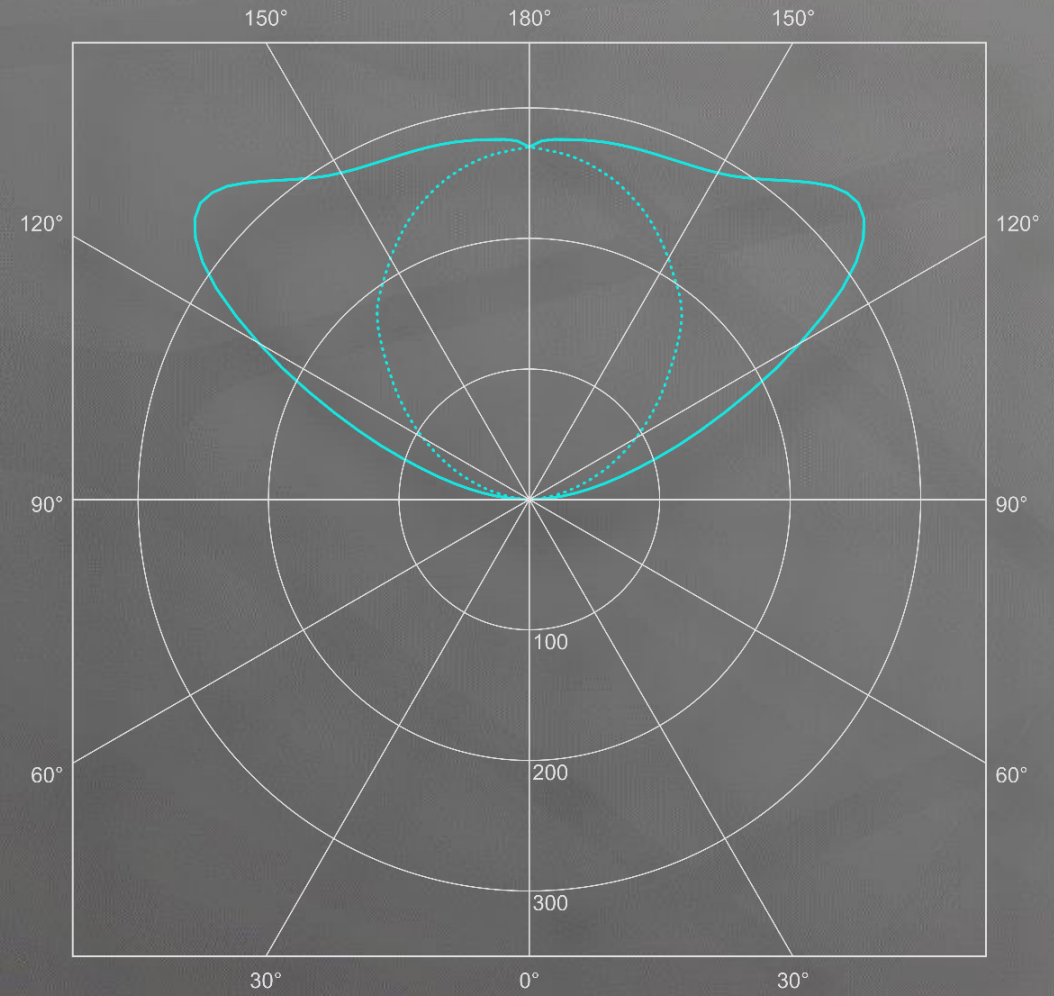
UGR < 16
 $65^\circ < 1000 \text{ cd/m}^2$

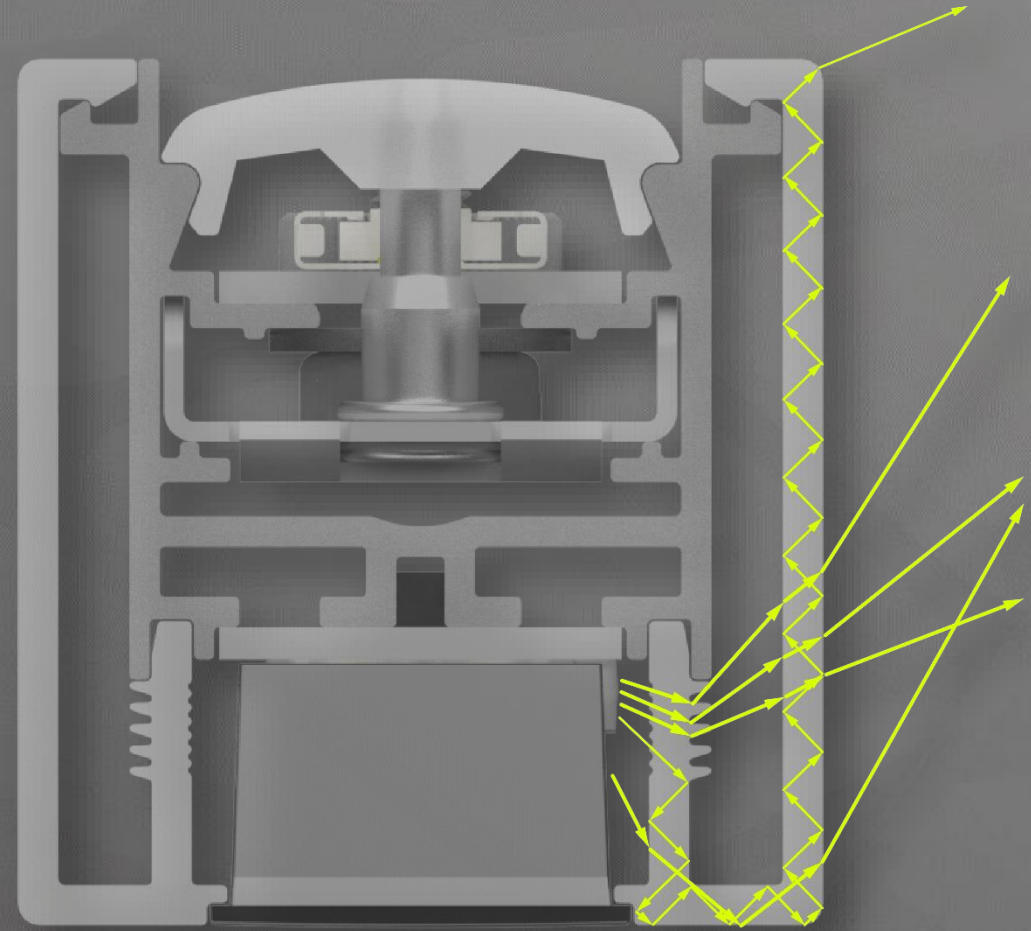
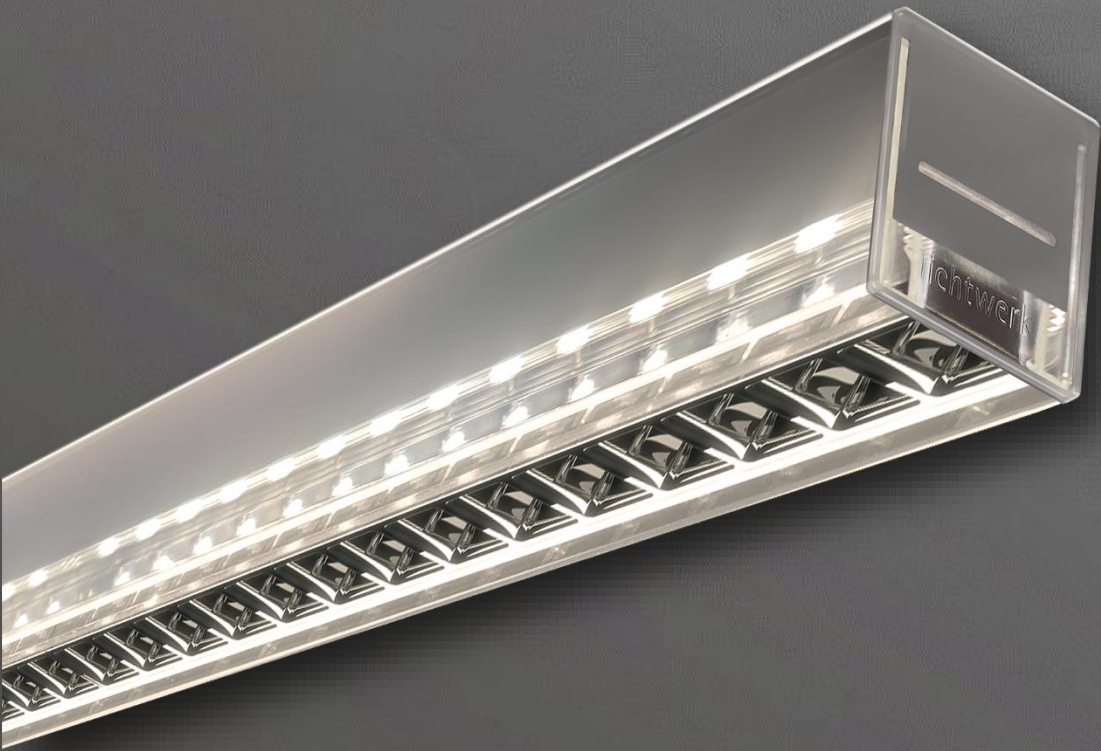


31,5 %

68,5 %

klir Lichttechnik





klir



klir



klir



klir

- Keine sichtbare Anschlussleitung
- CRI >90
- 4 Längen
- Lichtbandfähig
- Indirekt Anteil extrem breitstrahlend
- Betriebsgerät Aufbau und Deckeneinbau
- Minimalisiertes Design



 EXPERIENCE DAYs

Herzlichen Dank!



lichtwerk